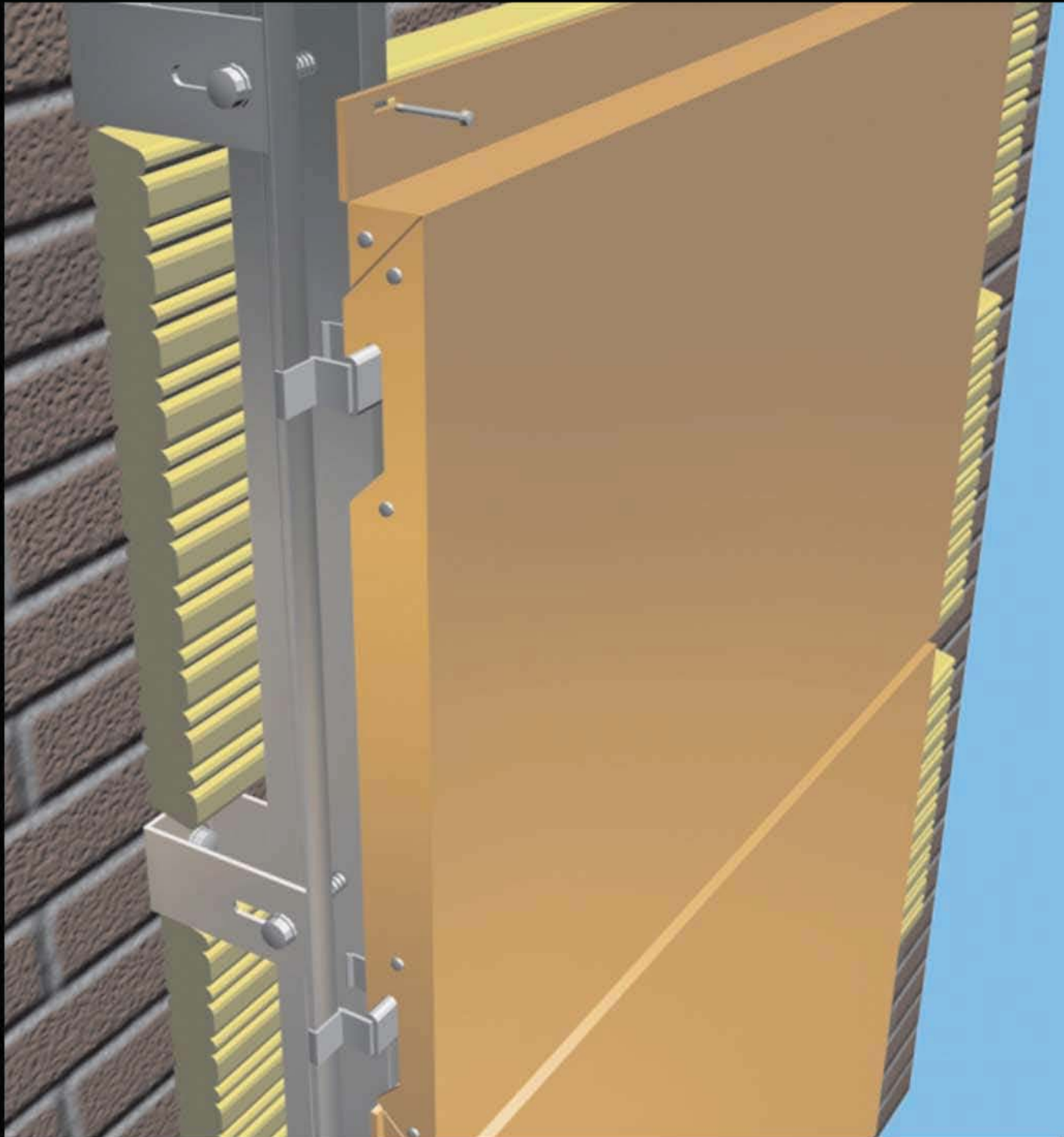


# ACM HANGING SYSTEM



# LCH-1/LC-2 system



N E S | V I S U A L T H I N K I N G

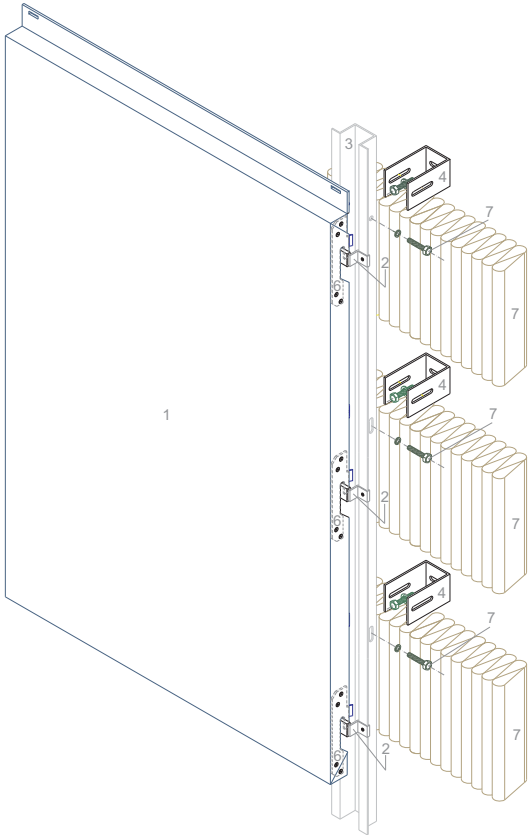
T/ 01206 843 200

E/ [info@nes-solutions.co.uk](mailto:info@nes-solutions.co.uk)

W/ [nes-solutions.co.uk](http://nes-solutions.co.uk)

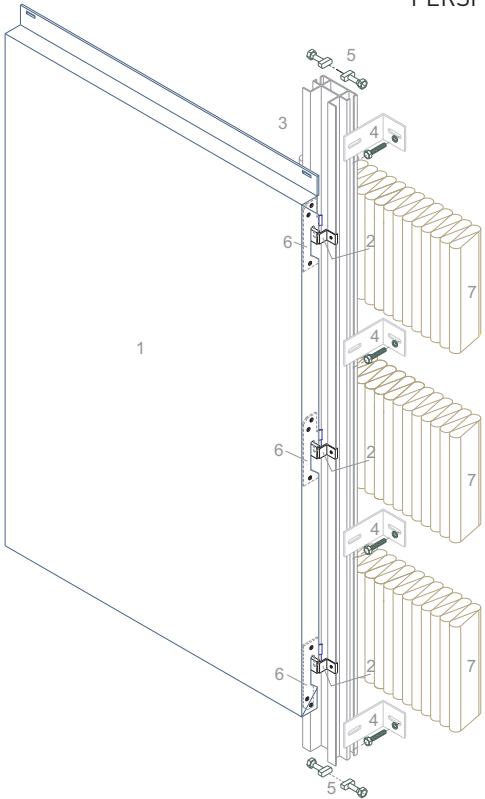
PERSPECTIVE LCH-1

- 1. ACM Cladding
- 2. Hanging profile LC-3 with rubber
- 3. Profile LCH-1
- 4. Fixing omega profile LCH-2
- 5. Fixing screws
- 6. 3mm LCR reinforcement for hanging
- 7. Insulation

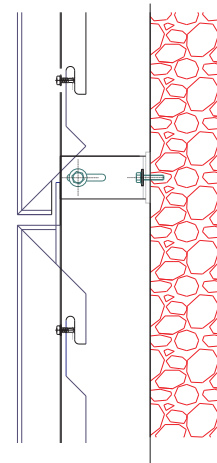
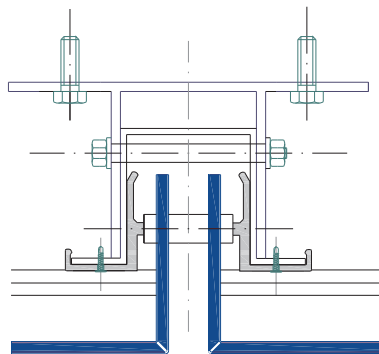
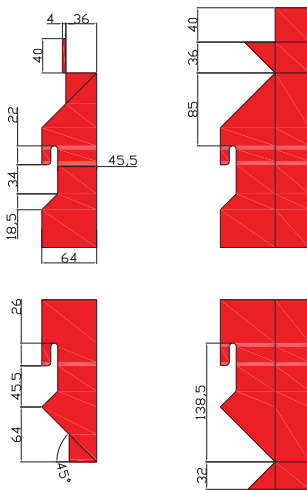
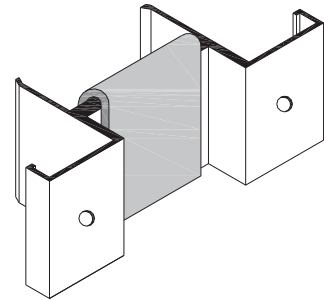
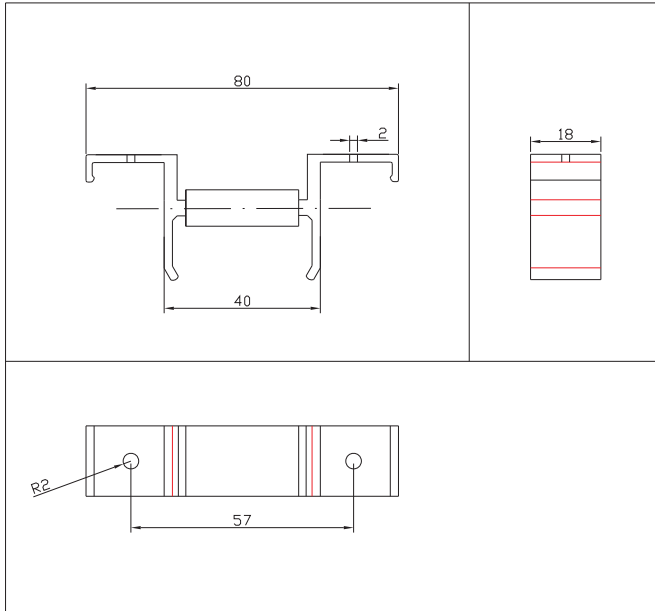


PERSPECTIVE LC-2

- 1. ACM Cladding
- 2. Hanging profile LC-3 with rubber
- 3. Profile LCH-1
- 4. Fixing profile LC-1
- 5. Fixing screws
- 6. 3mm LCR reinforcement for hanging
- 7. Insulation

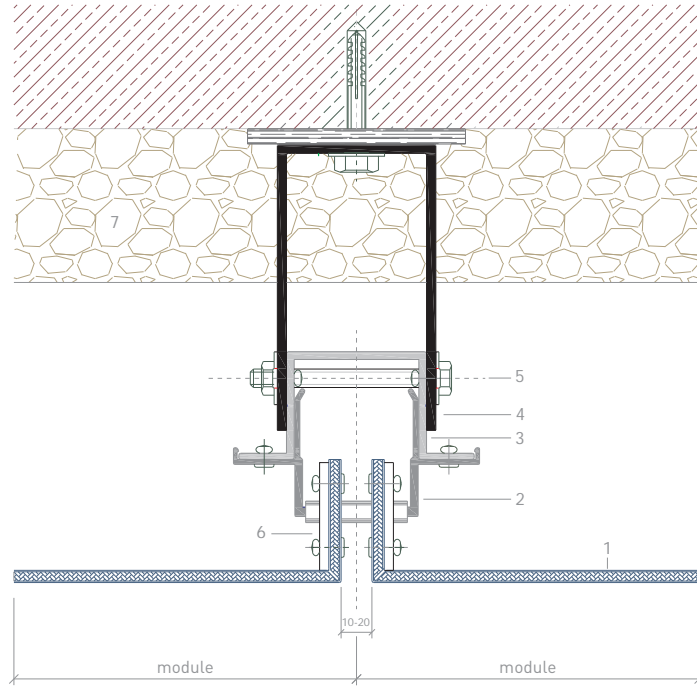


SYSTEM LCH1-R WITH LONG FIN ACM  
**NEW LC-3**



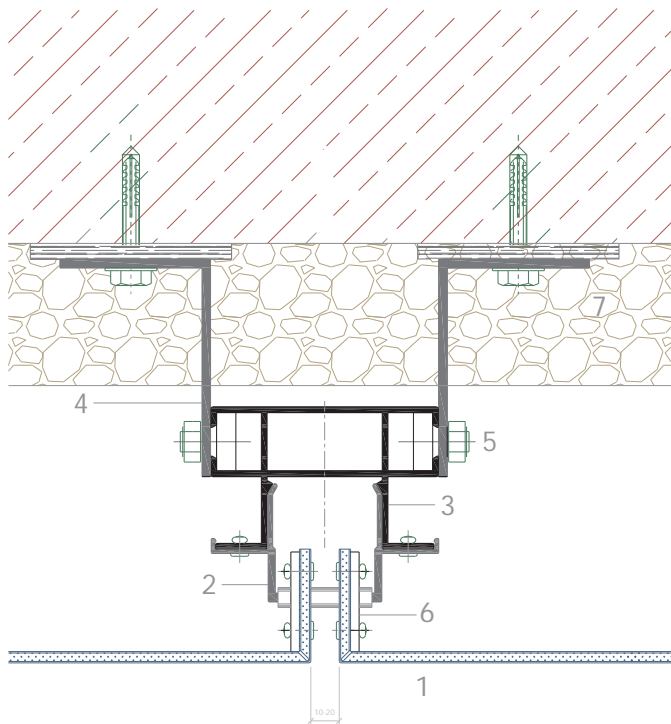
### HORIZONTAL SECTION LCH-1

1. ACM cladding
2. Hanging profile LC-3 with rubber
3. Profile LCH-1
4. Fixing omega profile LCH-2
5. Fixing screws
6. 3mm LCR reinforcement for hanging
7. Insulation



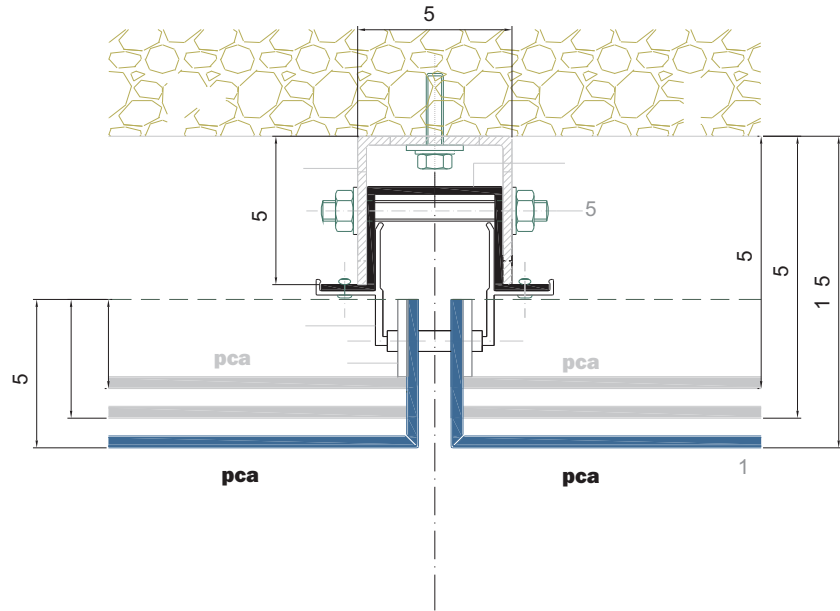
### HORIZONTAL SECTION LC-2

1. ACM cladding
2. Hanging profile LC-3 with rubber
3. Profile LC-2
4. Fixing profile LC-1
5. Fixing screws
6. 3mm LCR reinforcement for hanging
7. Insulation

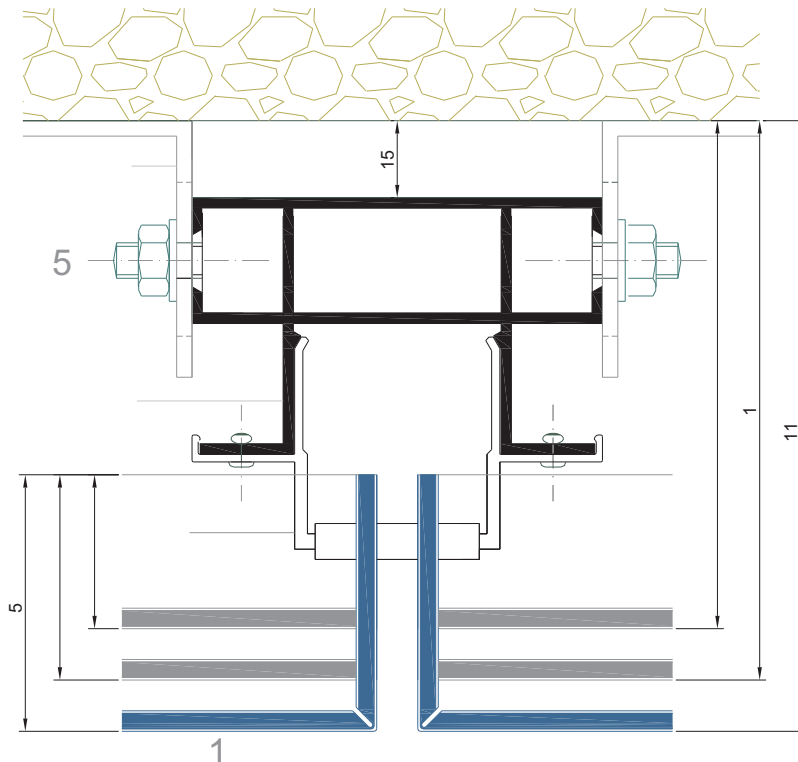


### MINIMUM DISTANCES LCH-1

1. ACM cladding
2. Hanging profile LC-3 with rubber
3. Profile LCH-1
4. Fixing omega profile LCH-2
5. Fixing screws
6. 3mm LCR reinforcement for hanging
7. Insulation



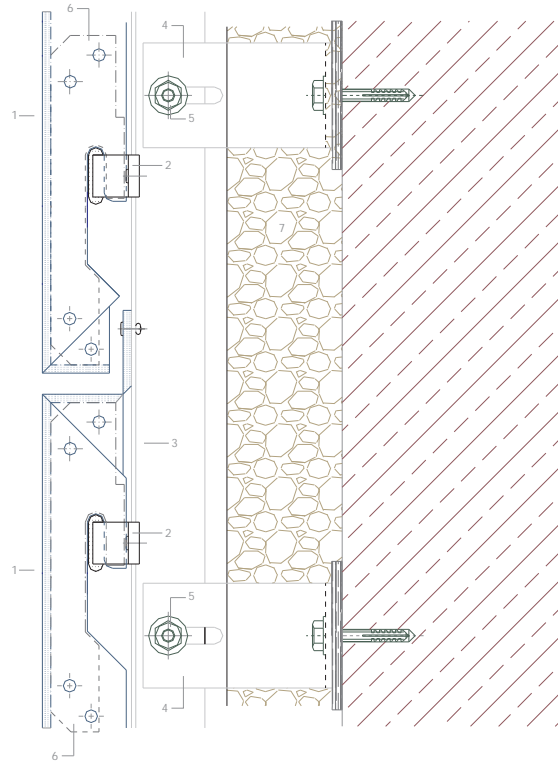
### MINIMUM DISTANCES LC-2



1. ACM cladding
2. Hanging profile LC-3 with rubber
3. Profile LC-2
4. Fixing profile LC-1
5. Fixing screws
6. 3mm LCR reinforcement for hanging
7. Insulation

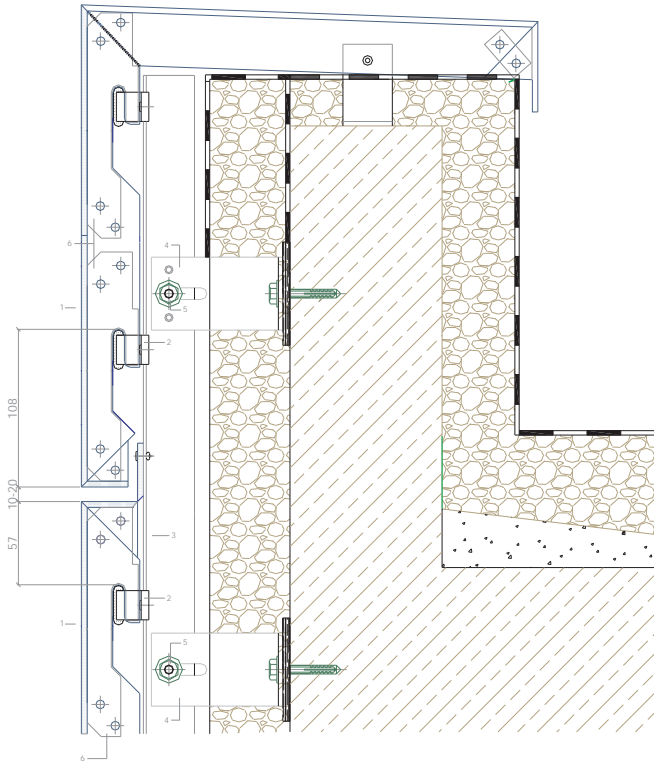
### VERTICAL SECTION

1. ACM cladding
2. Hanging profile LC-3 with rubber
3. Profile LCH-1/LC-2
4. Fixing omega profile LCH-2/LC-1
5. Fixing screws
6. 3mm LCR reinforcement for hanging
7. Insulation



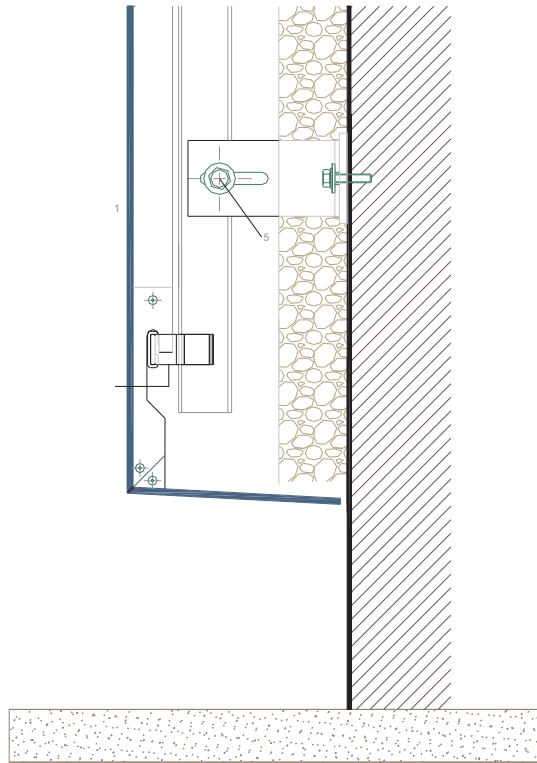
### BUILDING SURMOUNTING

1. ACM cladding
2. Hanging profile LC-3 with rubber
3. Profile LCH-1/LC-2
4. Fixing omega profile LCH-2/LC-1
5. Fixing screws
6. 3mm LCR reinforcement for hanging
7. Insulation



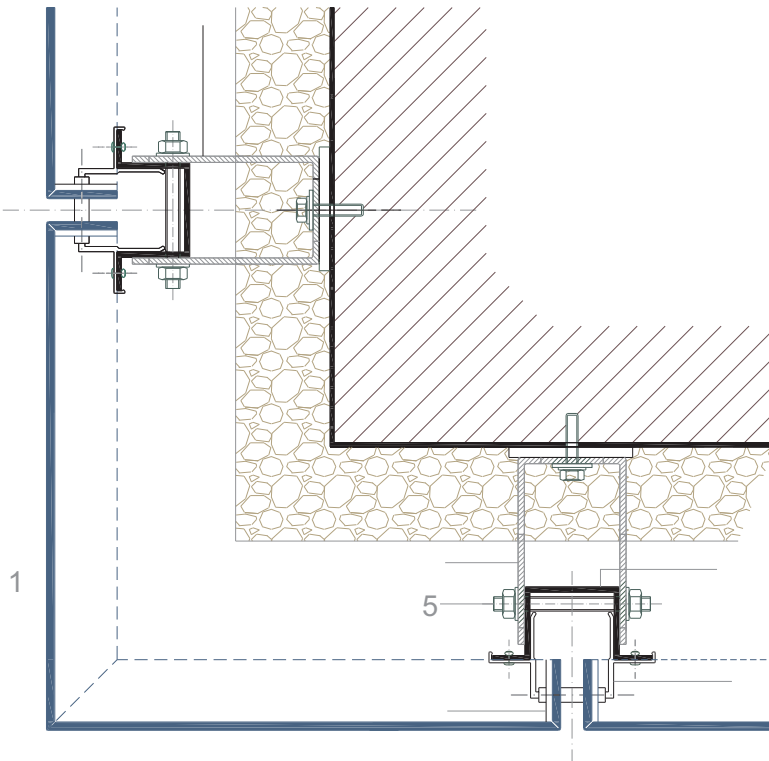
### CLADDING CLOSURE **DETAIL BOTTOM**

1. ACM cladding
2. Hanging profile LC-3 with rubber
3. Profile LCH-1/LC-2
4. Fixing omega profile LCH-2/LC-1
5. Fixing screws
6. 3mm LCR reinforcement for hanging
7. Insulation

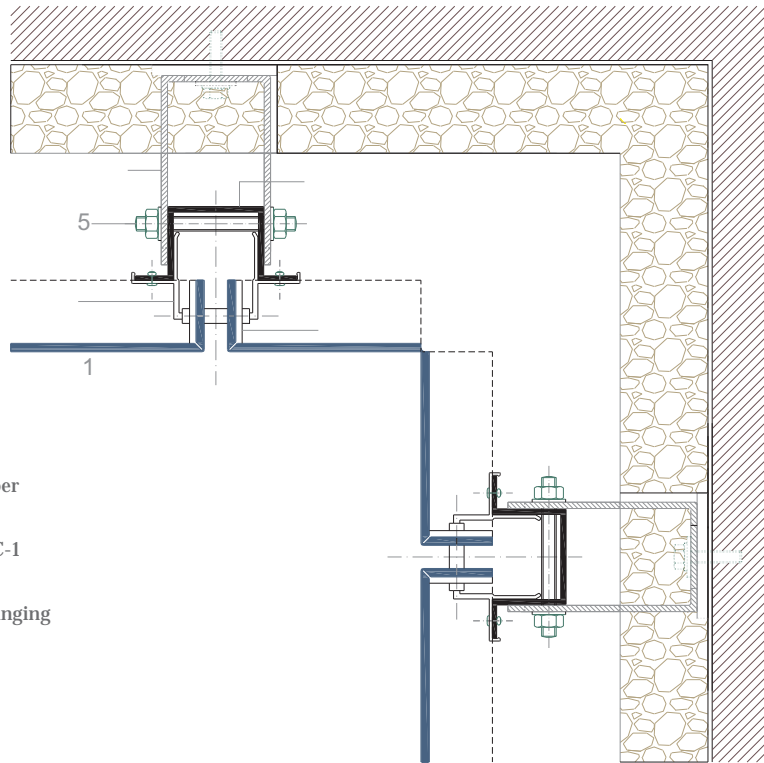


### CORNER **DETAIL**

1. ACM cladding
2. Hanging profile LC-3 with rubber
3. Profile LCH-1/LC-2
4. Fixing omega profile LCH-2/LC-1
5. Fixing screws
6. 3mm LCR reinforcement for hanging
7. Insulation

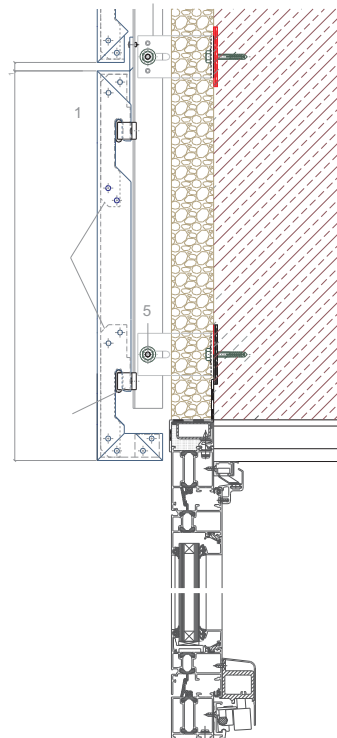


### INTERNAL CORNER DETAIL



1. ACM cladding
2. Hanging profile LC-3 with rubber
3. Profile LCH-1/LC-2
4. Fixing omega profile LCH-2/LC-1
5. Fixing screws
6. 3mm LCR reinforcement for hanging
7. Insulation

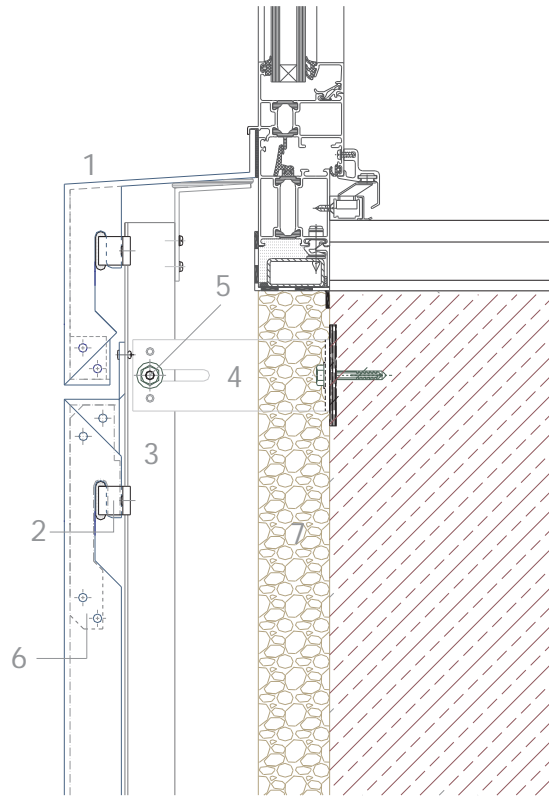
### DETAIL HEAD OF WINDOW



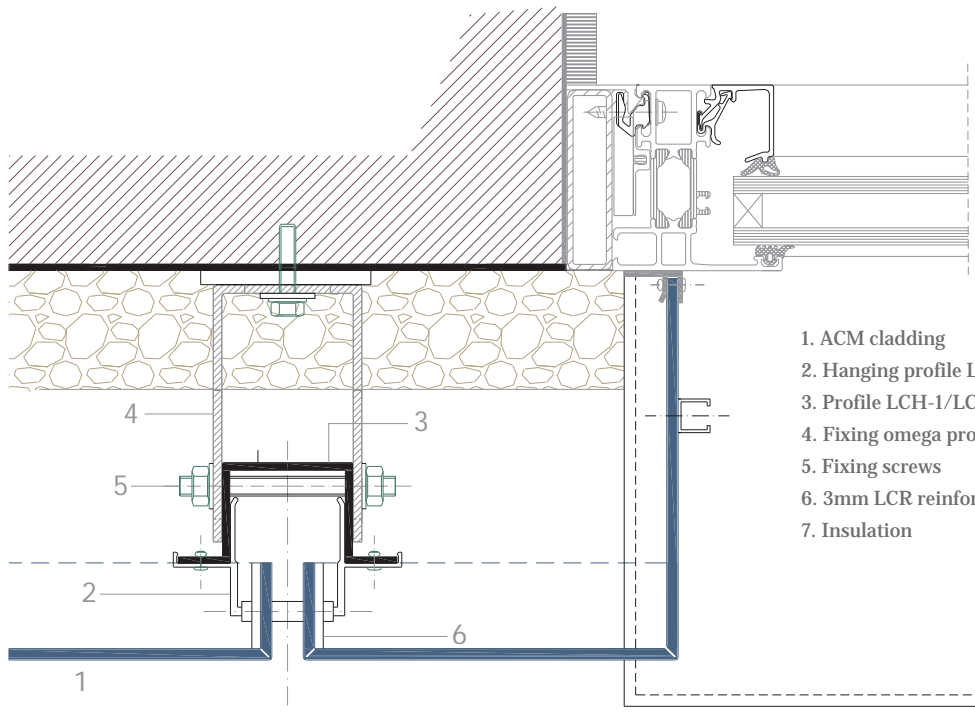
1. ACM cladding
2. Hanging profile LC-3 with rubber
3. Profile LCH-1/LC-2
4. Fixing omega profile LCH-2/LC-1
5. Fixing screws
6. 3mm LCR reinforcement for hanging
7. Insulation

EXTERNAL CILL DETAIL AT WINDOW

- 1. ACM cladding
- 2. Hanging profile LC-3 with rubber
- 3. Profile LCH-1/LC-2
- 4. Fixing omega profile LCH-2/LC-1
- 5. Fixing screws
- 6. 3mm LCR reinforcement for hanging
- 7. Insulation

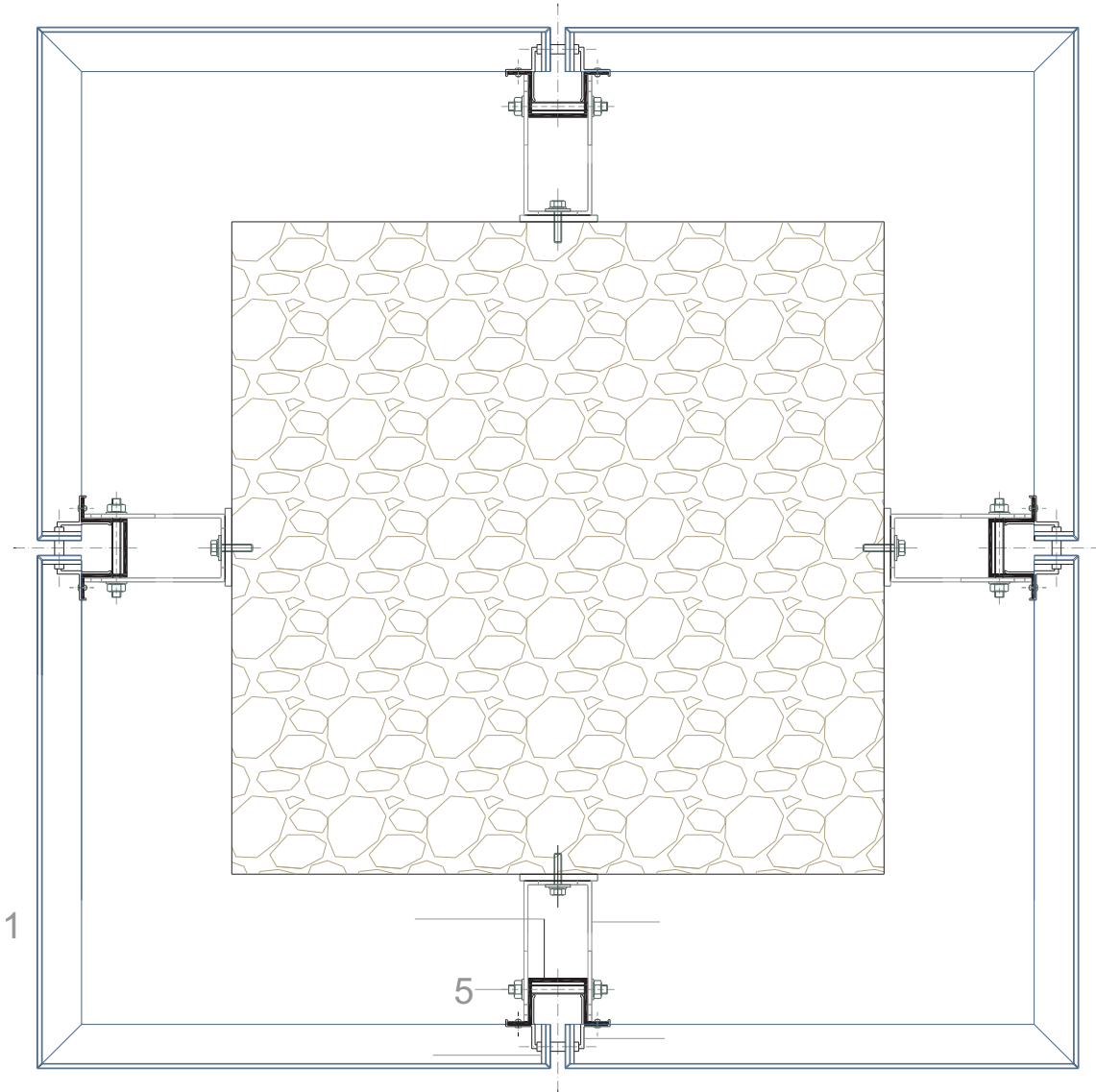


HORIZONTAL SECTION JAMB



- 1. ACM cladding
- 2. Hanging profile LC-3 with rubber
- 3. Profile LCH-1/LC-2
- 4. Fixing omega profile LCH-2/LC-1
- 5. Fixing screws
- 6. 3mm LCR reinforcement for hanging
- 7. Insulation

## COLUMN DETAILS



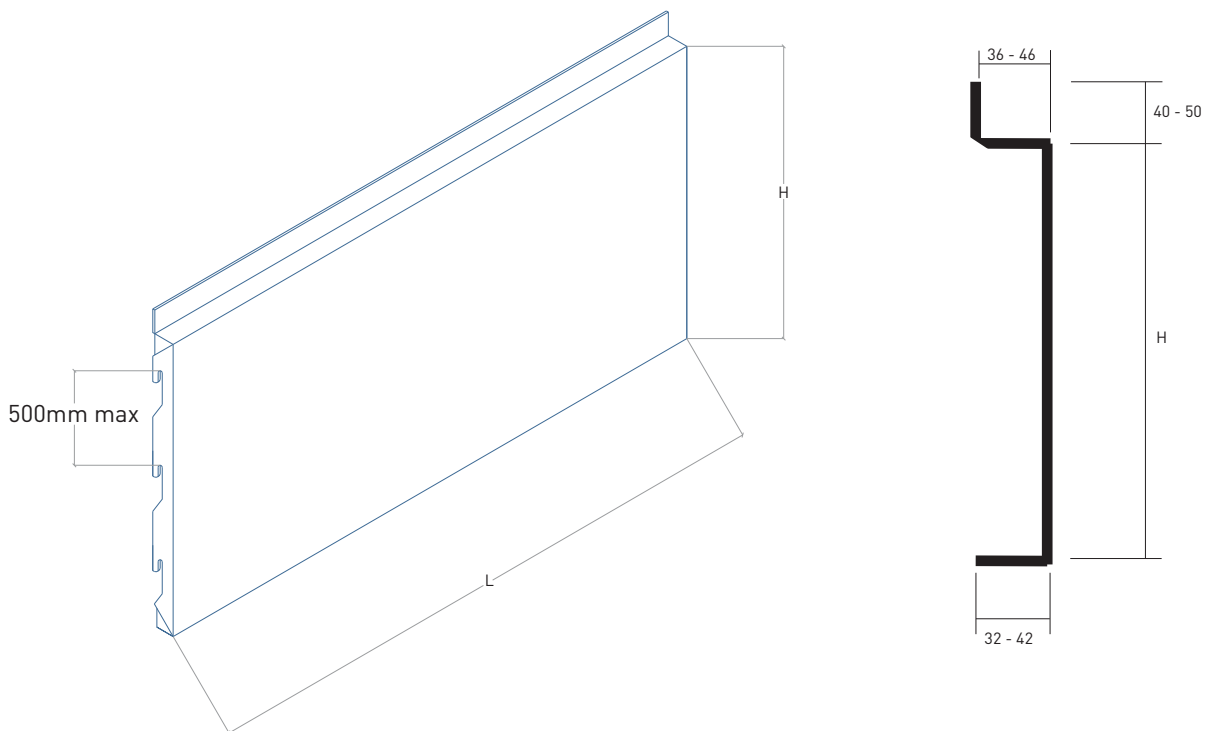
1. ACM cladding
2. Hanging profile LC-3 with rubber
3. Profile LCH-1/LC-2
4. Fixing omega profile LCH-2/LC-1
5. Fixing screws
6. 3mm LCR reinforcement for hanging
7. Insulation

Wind pressure (kg/m<sup>2</sup>) without reinforcement, ACM panel 4mm.

Length			900	1000	1150	1300	1400	1500	1700	1800	2000	2200	2300	2400	2700	2800
Width	Fixings by side	Lateral														
860	3	40	174	142	107	83	70	60	44	38	29	23	20	18	13	11
		50	217	183	148	122	107	95	74	66	52	38	37	32	24	22
1010	3	40	-	-	84	65	56	48	36	31	24	18	16	15	10	9
		50	-	-	111	91	80	71	57	51	40	33	29	26	20	18
1110	3	40	-	-	74	57	48	42	31	27	21	16	14	13	9	8
		50	-	-	95	77	68	60	48	43	35	28	25	23	17	16
1260	4	40	-	-	-	48	41	35	26	23	18	14	12	11	8	7
		50	-	-	-	63	55	49	39	35	28	23	21	19	14	13
1360	4	40	-	-	-	-	37	31	23	21	16	12	11	10	7	6
		50	-	-	-	-	49	43	34	31	25	20	19	17	13	12

According to calculations of the **Aeronautical Engineers University School, Madrid**

## Horizontal



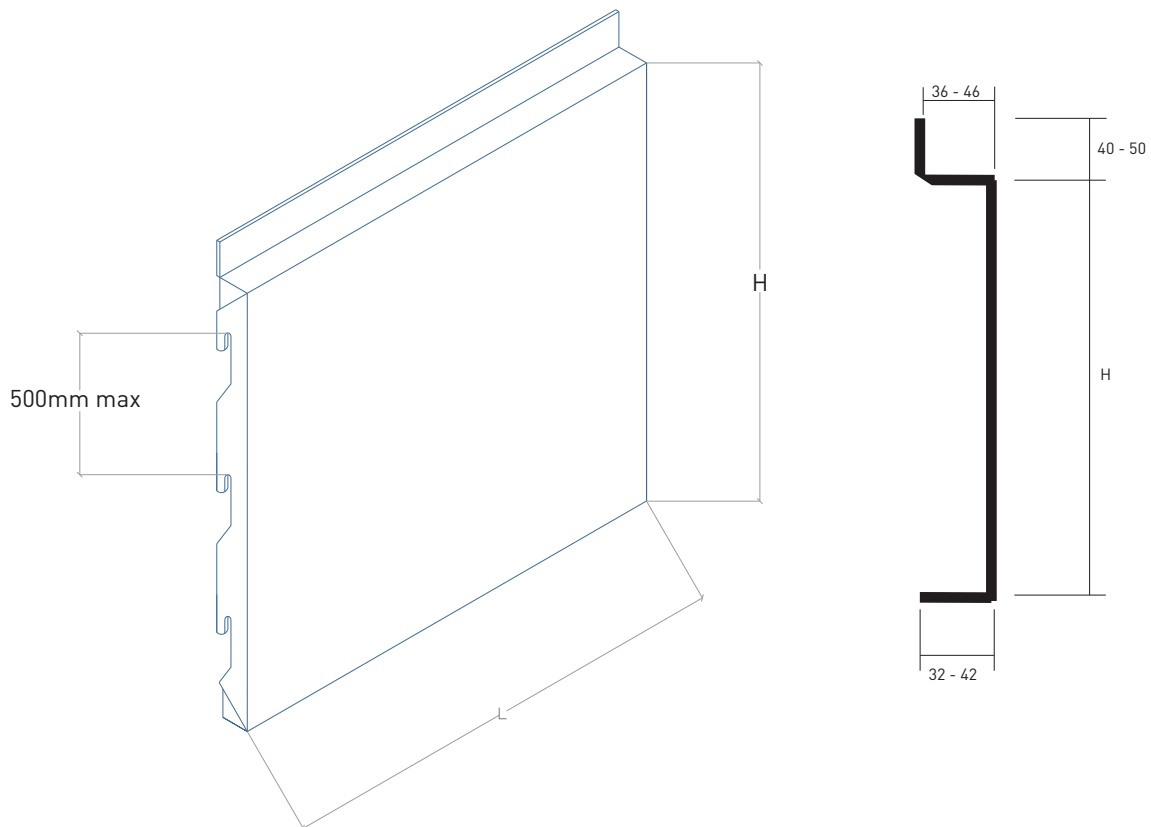
Wind pressure (kg/m<sup>2</sup>) without reinforcement, ACM panel 4mm.

Width	900	1000	1150	1300	1400	1500	1700	1800	2000	2200	2300	2400	2700	2800
	3	3	3	4	4	4	5	5	5	6	6	6	7	7

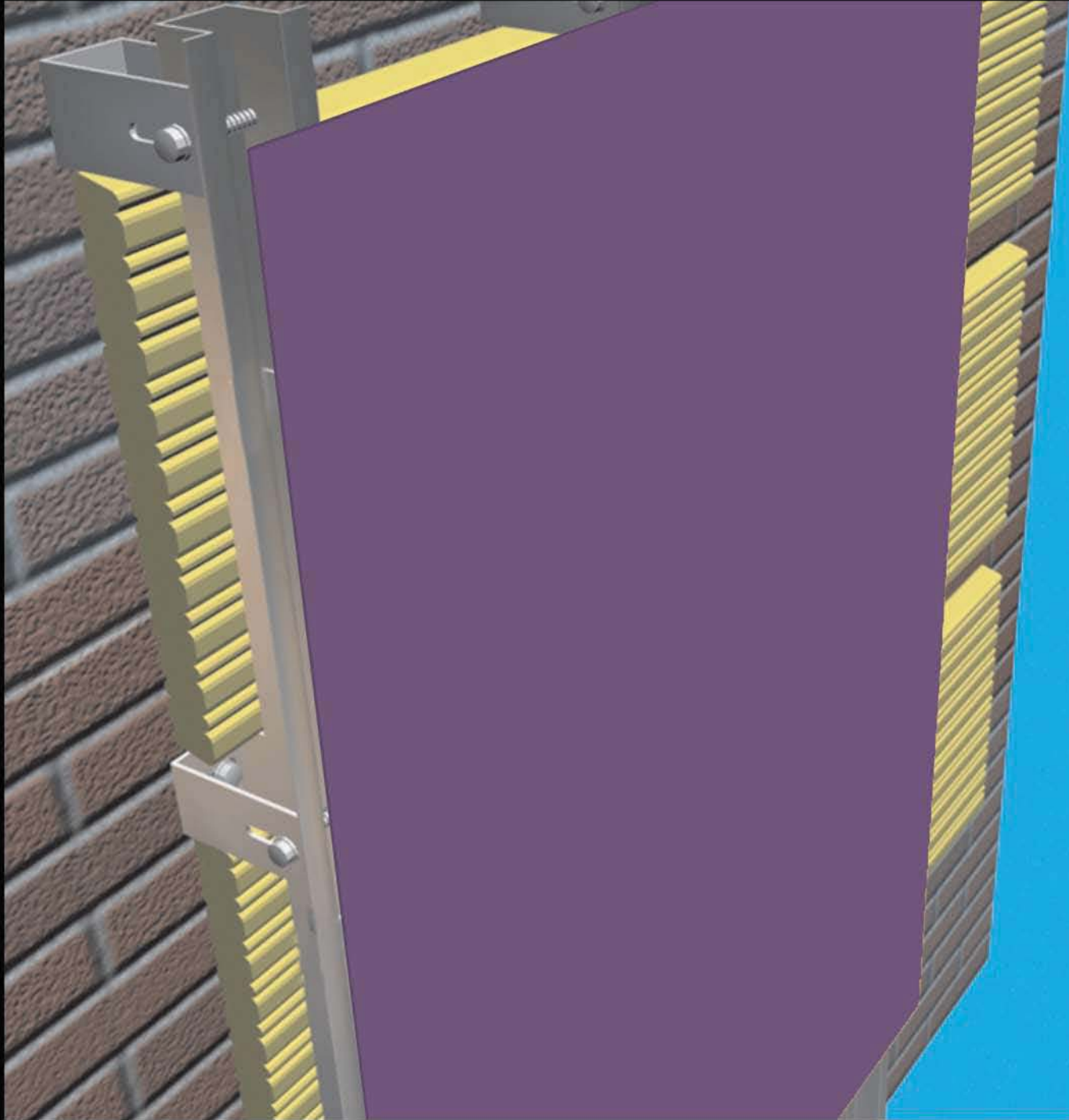
Length	Lateral														
900	40	164	135	109	93	85	79	70	66	61	57	55	54	50	49
	50	202	166	133	113	103	96	85	81	75	70	68	67	63	62
1000	40	-	114	90	75	67	62	54	51	46	43	41	40	37	36
	50	-	143	111	92	83	76	67	63	57	53	52	50	47	46
1150	40	-	-	71	57	51	46	39	36	32	30	28	27	25	24
	50	-	-	90	72	64	58	49	46	41	38	36	35	32	31
1250	40	-	-	-	49	43	39	32	30	27	24	23	22	20	19
	50	-	-	-	64	56	50	41	38	34	31	29	28	26	25
1400	40	-	-	-	-	35	31	26	24	20	18	17	16	15	14
	50	-	-	-	-	47	41	33	31	27	24	23	22	19	19

According to calculations of the **Aeronautical Engineers University School, Madrid**

## Vertical



# LC - 9 system



N E S | V I S U A L T H I N K I N G

T/ 01206 843 200

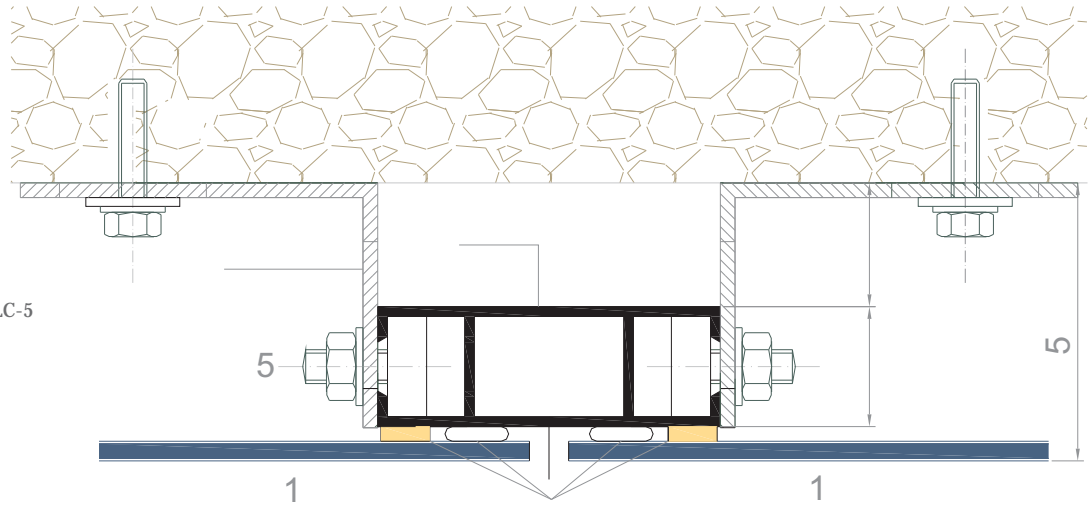
E/ [info@nes-solutions.co.uk](mailto:info@nes-solutions.co.uk)

W/ [nes-solutions.co.uk](http://nes-solutions.co.uk)



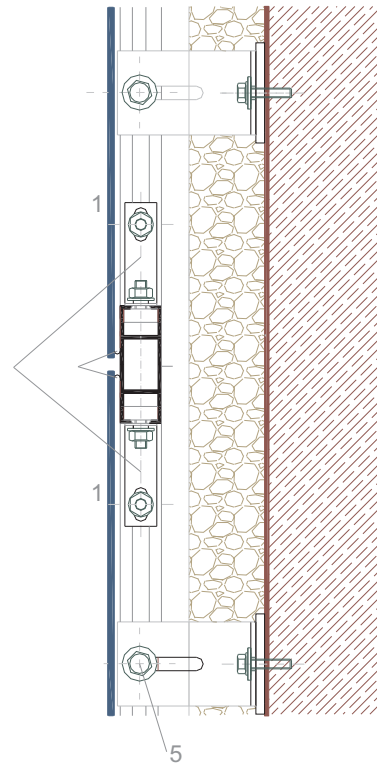
MINIMUM DISTANCES LC-9

- 1. ACM Cladding
- 2. Connecting profile LC-5
- 3. Profile LC-9
- 4. Fixing profile LC-1
- 5. Fixing screws LC-8
- 6. Sikatack
- 7. Insulation

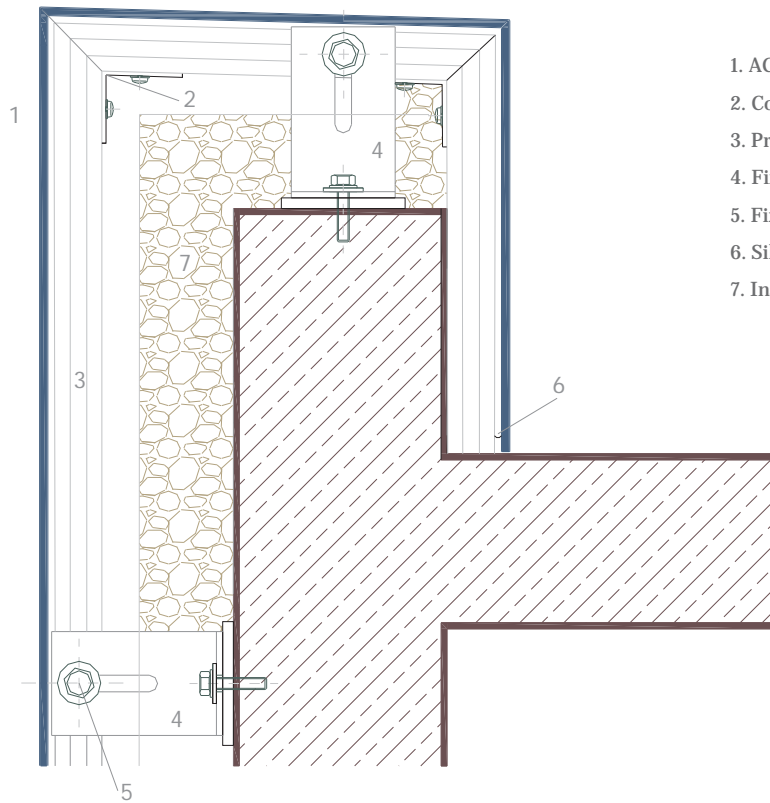


VERTICAL SECTION LC-9

- 1. ACM Cladding
- 2. Connecting profile LC-5
- 3. Profile LC-9
- 4. Fixing profile LC-1
- 5. Fixing screws LC-8
- 6. Sikatack
- 7. Insulation

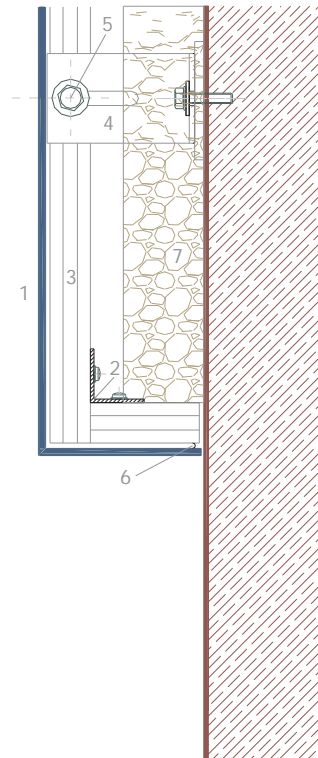


### BUILDING SURMOUNTING LC-9



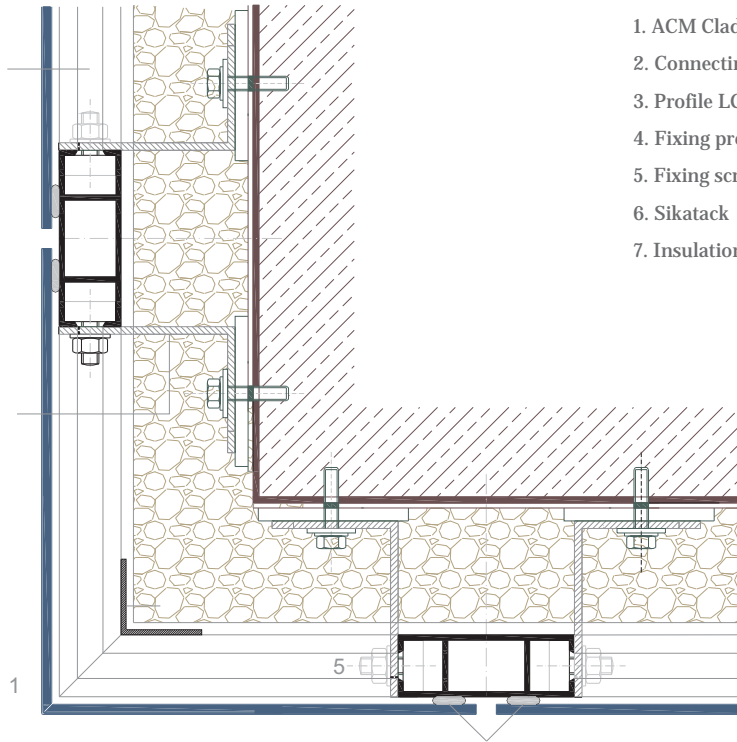
- 1. ACM Cladding
- 2. Connecting profile LC-5
- 3. Profile LC-9
- 4. Fixing profile LC-1
- 5. Fixing screws LC-8
- 6. Sikatack
- 7. Insulation

### CLADDING CLOSURE DETAIL BOTTOM LC-9



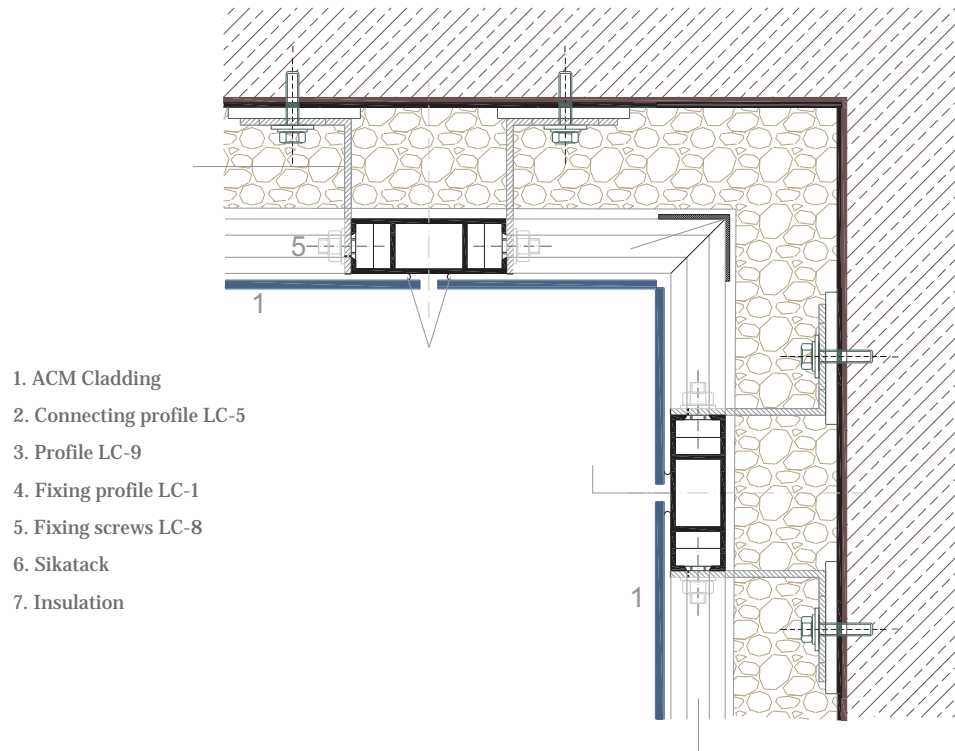
- 1. ACM Cladding
- 2. Connecting profile LC-5
- 3. Profile LC-9
- 4. Fixing profile LC-1
- 5. Fixing screws LC-8
- 6. Sikatack
- 7. Insulation

### HORIZONTAL CORNER DETAIL LC-9



1. ACM Cladding
2. Connecting profile LC-5
3. Profile LC-9
4. Fixing profile LC-1
5. Fixing screws LC-8
6. Sikatak
7. Insulation

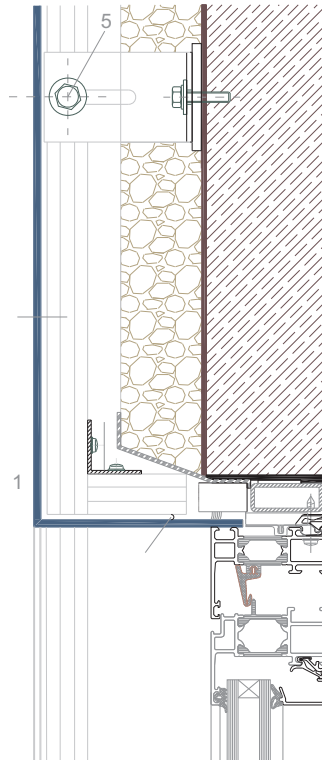
### HORIZONTAL INTERNAL CORNER DETAIL LC-9



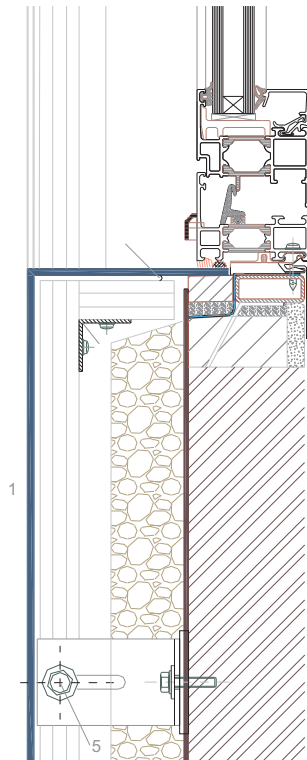
1. ACM Cladding
2. Connecting profile LC-5
3. Profile LC-9
4. Fixing profile LC-1
5. Fixing screws LC-8
6. Sikatak
7. Insulation

### DETAIL HEAD OF WINDOW LC-9

1. ACM Cladding
2. Connecting profile LC-5
3. Profile LC-9
4. Fixing profile LC-1
5. Fixing screws LC-8
6. Sikatack
7. Insulation

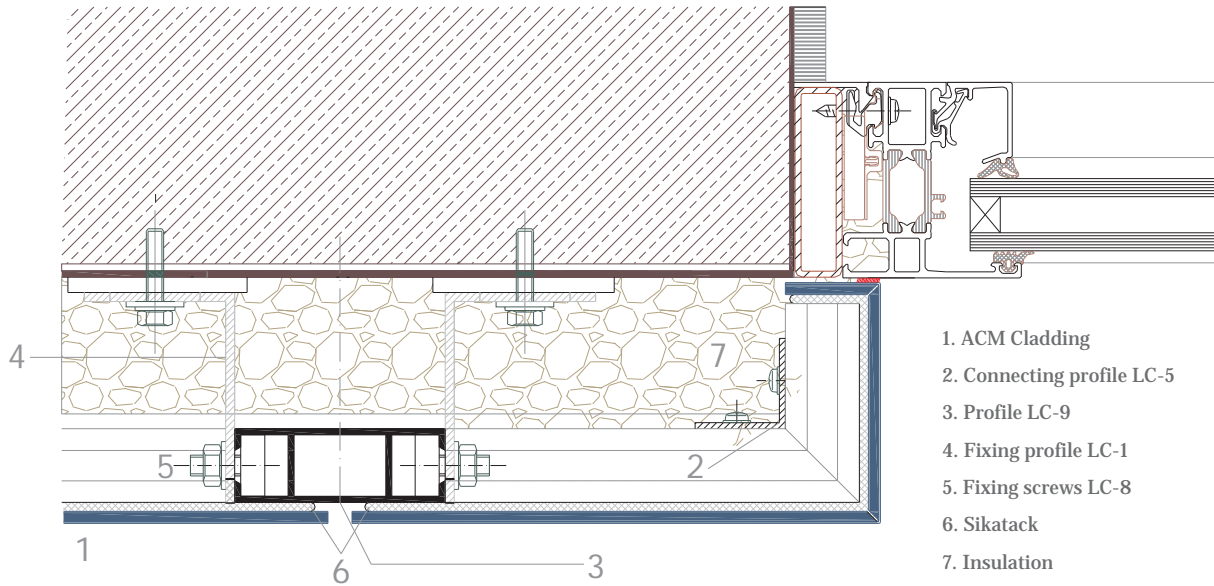


### EXTERNAL CILL DETAIL AT WINDOW LC-9



1. ACM Cladding
2. Connecting profile LC-5
3. Profile LC-9
4. Fixing profile LC-1
5. Fixing screws LC-8
6. Sikatack
7. Insulation

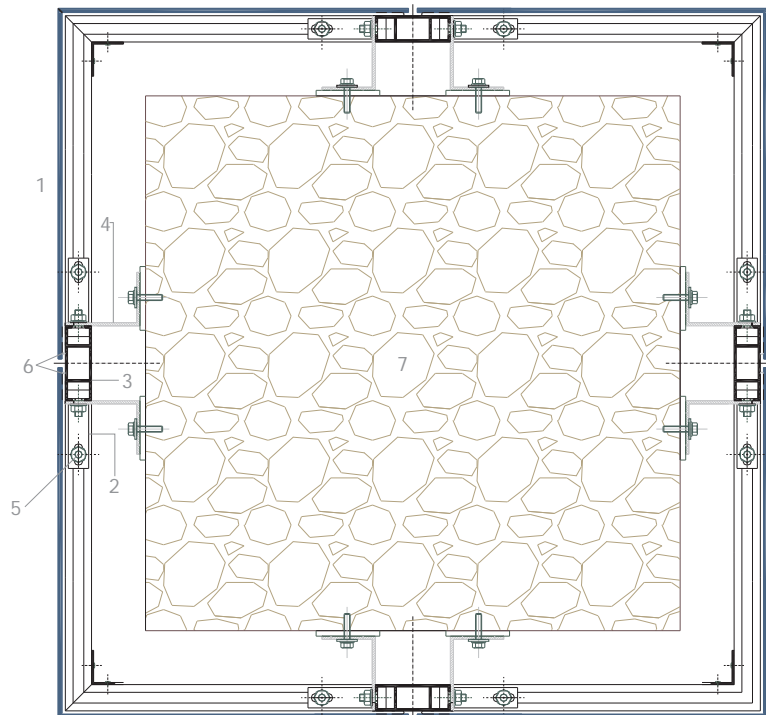
### HORIZONTAL SECTION JAMB LC-9



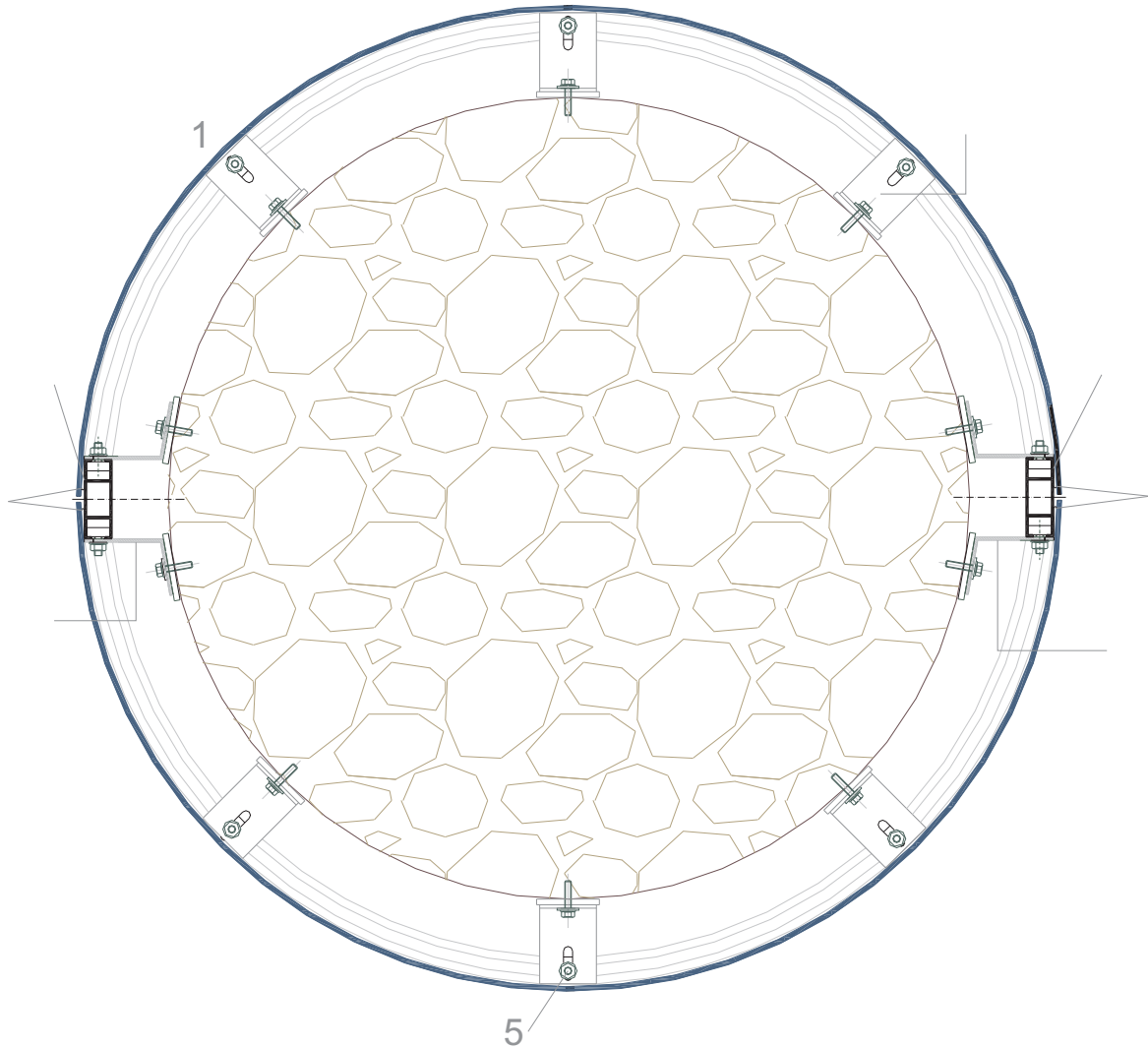
- 1. ACM Cladding
- 2. Connecting profile LC-5
- 3. Profile LC-9
- 4. Fixing profile LC-1
- 5. Fixing screws LC-8
- 6. Sikatack
- 7. Insulation

### COLUMN DETAIL LC-9

- 1. ACM Cladding
- 2. Connecting profile LC-5
- 3. Profile LC-9
- 4. Fixing profile LC-1
- 5. Fixing screws LC-8
- 6. Sikatack
- 7. Insulation



## COLUMN DETAIL LC-9



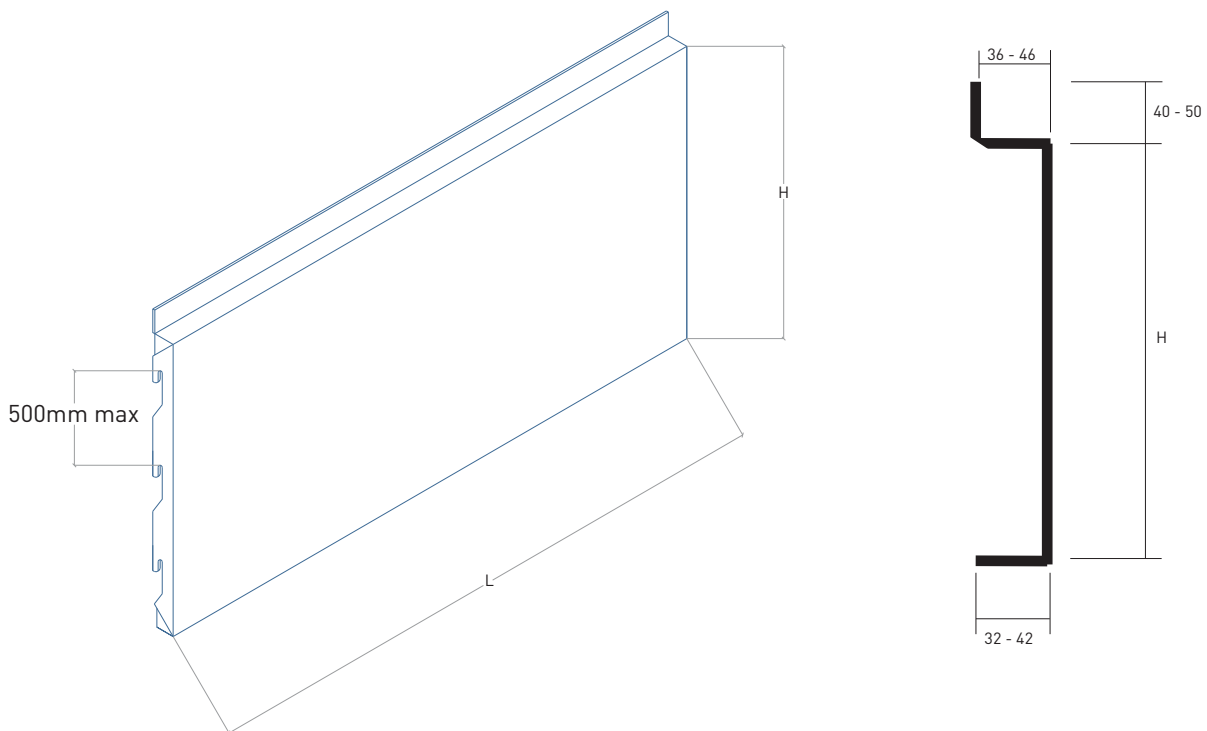
1. ACM Cladding
2. Connecting profile LC-5
3. Profile LC-9
4. Fixing profile LC-1
5. Fixing screws LC-8
6. Sikatak
7. Insulation

Wind pressure (kg/m<sup>2</sup>) without reinforcement, ACM panel 4mm.

Length			900	1000	1150	1300	1400	1500	1700	1800	2000	2200	2300	2400	2700	2800
Width	Fixings by side	Lateral														
860	3	40	174	142	107	83	70	60	44	38	29	23	20	18	13	11
		50	217	183	148	122	107	95	74	66	52	38	37	32	24	22
1010	3	40	-	-	84	65	56	48	36	31	24	18	16	15	10	9
		50	-	-	111	91	80	71	57	51	40	33	29	26	20	18
1110	3	40	-	-	74	57	48	42	31	27	21	16	14	13	9	8
		50	-	-	95	77	68	60	48	43	35	28	25	23	17	16
1260	4	40	-	-	-	48	41	35	26	23	18	14	12	11	8	7
		50	-	-	-	63	55	49	39	35	28	23	21	19	14	13
1360	4	40	-	-	-	-	37	31	23	21	16	12	11	10	7	6
		50	-	-	-	-	49	43	34	31	25	20	19	17	13	12

According to calculations of the **Aeronautical Engineers University School, Madrid**

## Horizontal



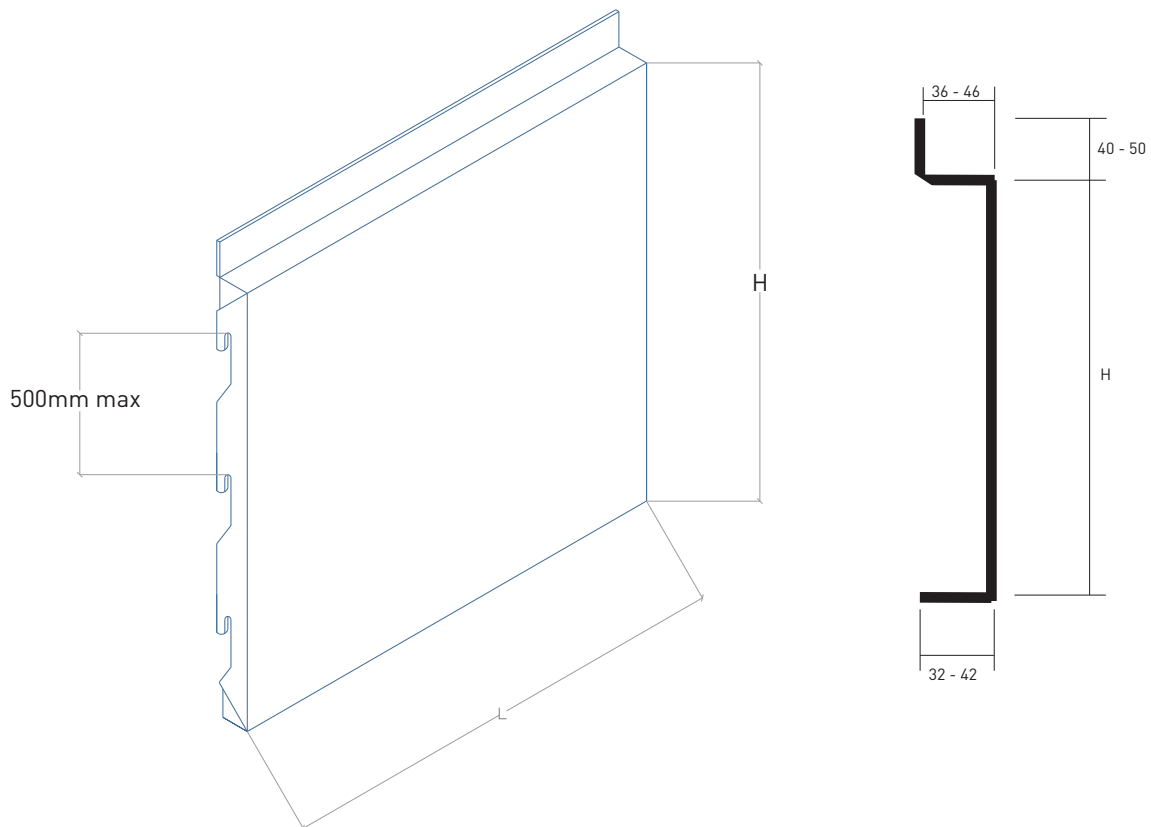
Wind pressure (kg/m<sup>2</sup>) without reinforcement, ACM panel 4mm.

Width	900	1000	1150	1300	1400	1500	1700	1800	2000	2200	2300	2400	2700	2800
	3	3	3	4	4	4	5	5	5	6	6	6	7	7

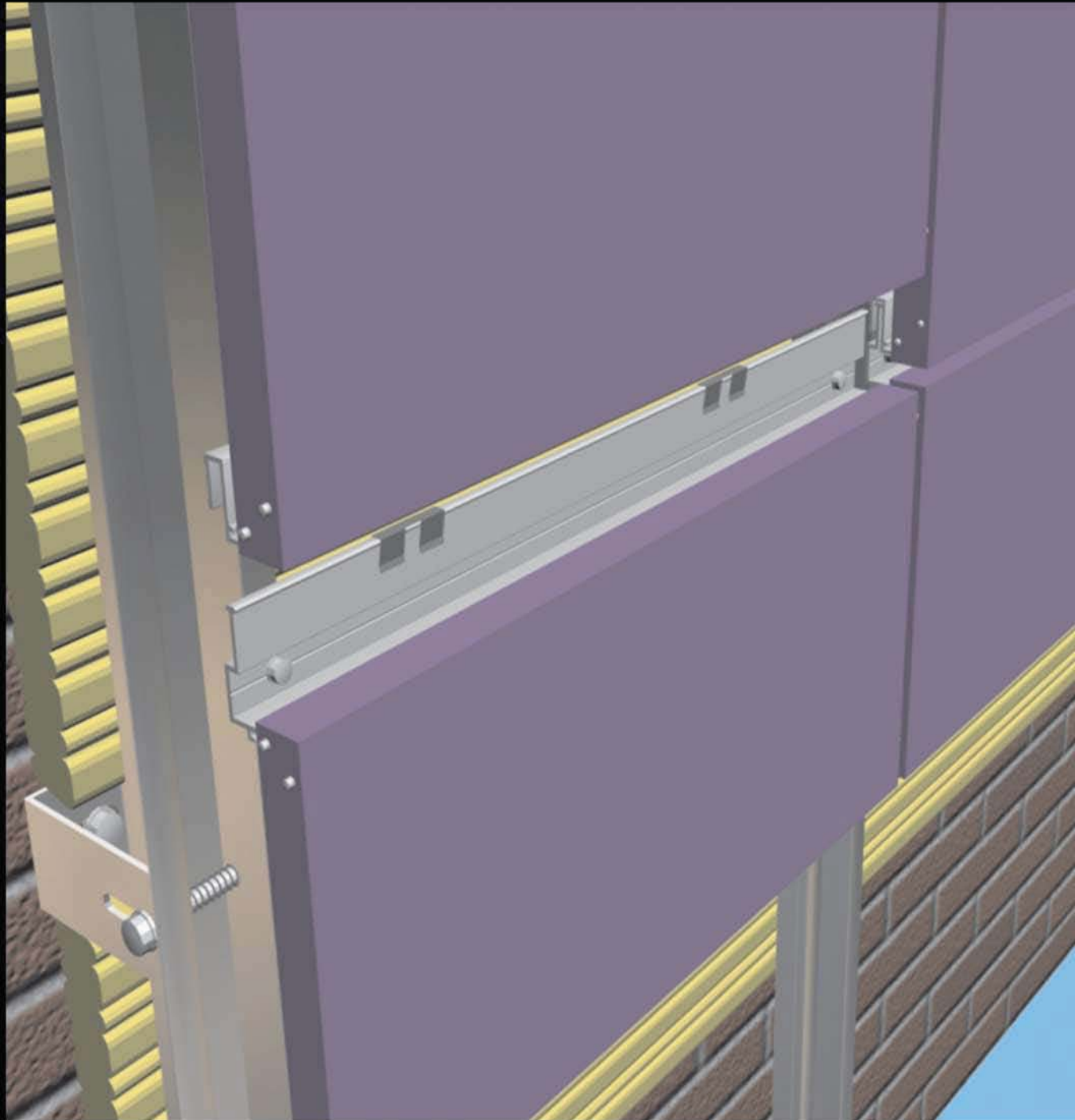
Length	Lateral														
900	40	164	135	109	93	85	79	70	66	61	57	55	54	50	49
	50	202	166	133	113	103	96	85	81	75	70	68	67	63	62
1000	40	-	114	90	75	67	62	54	51	46	43	41	40	37	36
	50	-	143	111	92	83	76	67	63	57	53	52	50	47	46
1150	40	-	-	71	57	51	46	39	36	32	30	28	27	25	24
	50	-	-	90	72	64	58	49	46	41	38	36	35	32	31
1250	40	-	-	-	49	43	39	32	30	27	24	23	22	20	19
	50	-	-	-	64	56	50	41	38	34	31	29	28	26	25
1400	40	-	-	-	-	35	31	26	24	20	18	17	16	15	14
	50	-	-	-	-	47	41	33	31	27	24	23	22	19	19

According to calculations of the **Aeronautical Engineers University School, Madrid**

## Vertical



# LC - 4 / LC - 6 system



N E S | V I S U A L T H I N K I N G

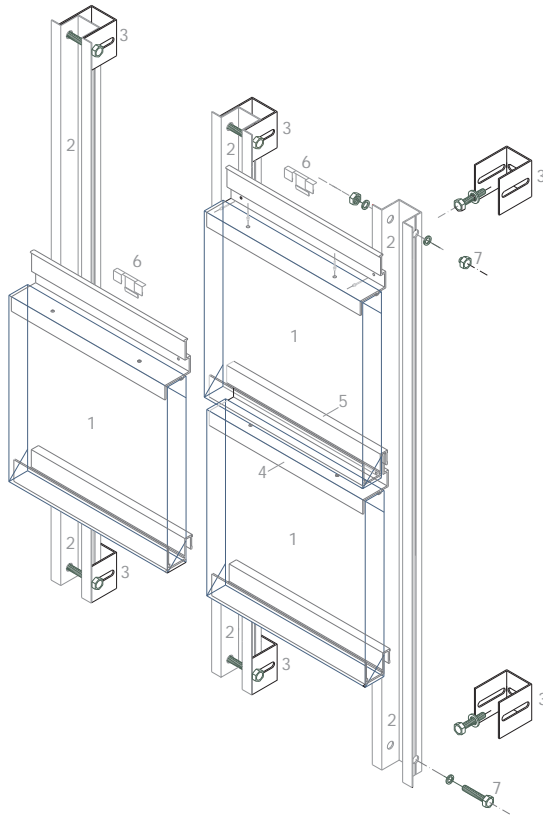
T/ 01206 843 200

E/ [info@nes-solutions.co.uk](mailto:info@nes-solutions.co.uk)

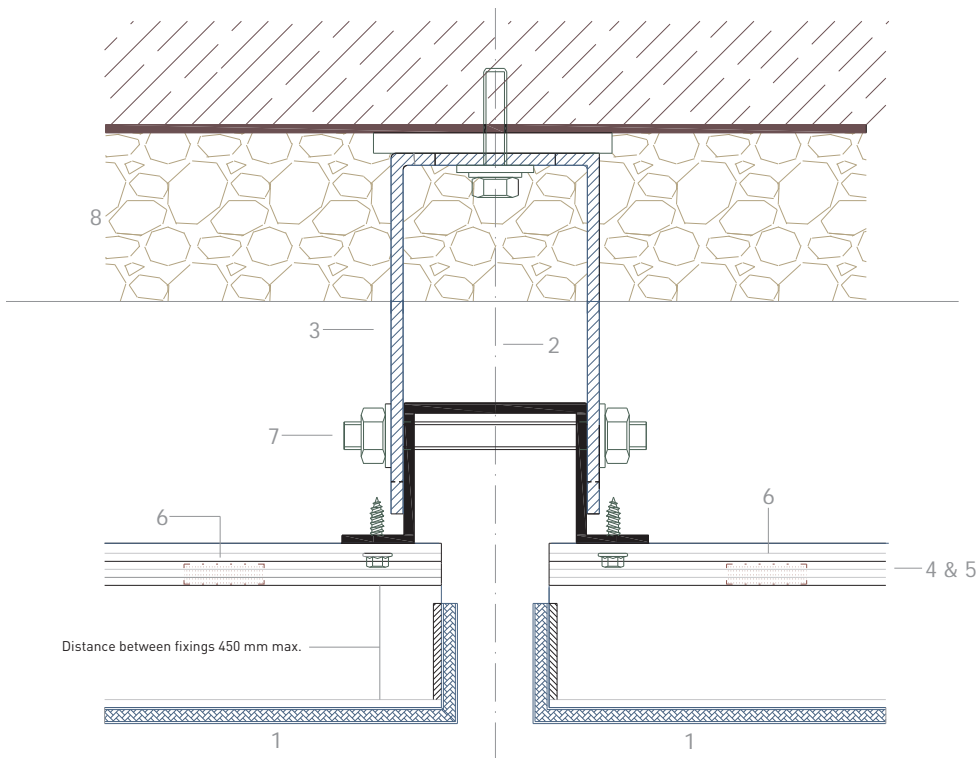
W/ [nes-solutions.co.uk](http://nes-solutions.co.uk)

PERSPECTIVE LC-4 / LC-6

- 1. ACM Cladding
- 2. Profile LCH1
- 3. Fixing Profile LCH2
- 4. Profile LC4
- 5. Profile LC6
- 6. Antivibration piece
- 7. Fixing screws
- 8. Insulation



HORIZONTAL SECTION LC-4 / LC-6

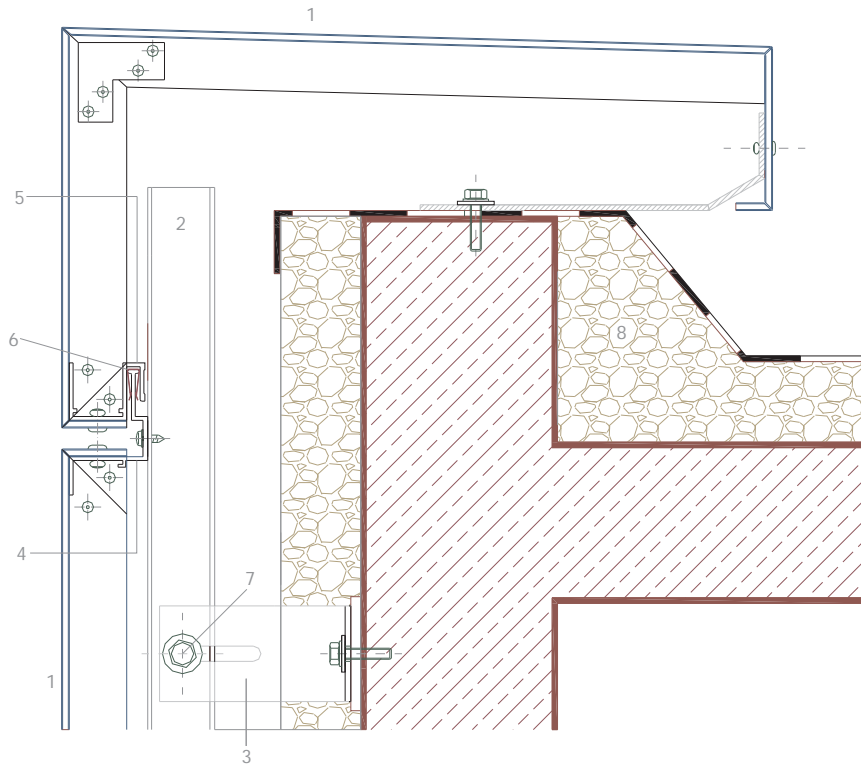


- 1. ACM Cladding
- 2. Profile LCH1
- 3. Fixing Profile LCH2
- 4. Profile LC4
- 5. Profile LC6
- 6. Antivibration piece
- 7. Fixing screws
- 8. Insulation

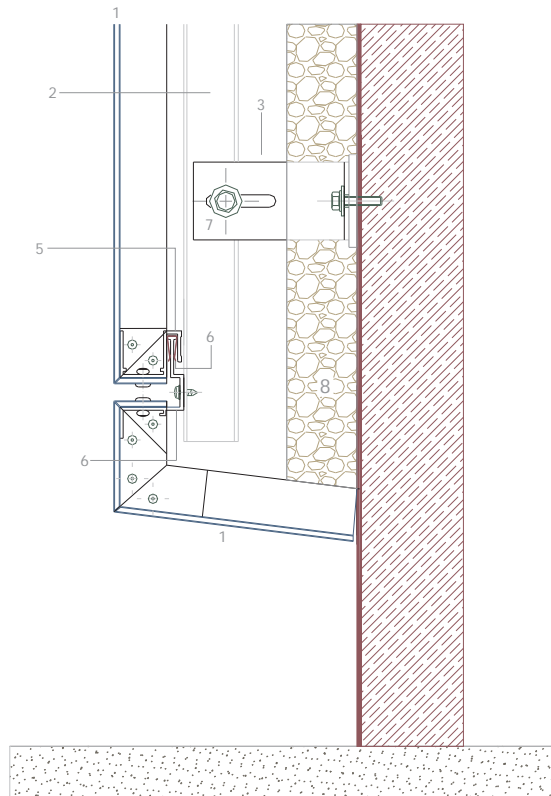


BUILDING SURMOUNTING **LC-4 / LC-6**

- 1. ACM Cladding
- 2. Profile LCH1
- 3. Fixing Profile LCH2
- 4. Profile LC4
- 5. Profile LC6
- 6. Antivibration piece
- 7. Fixing screws
- 8. Insulation

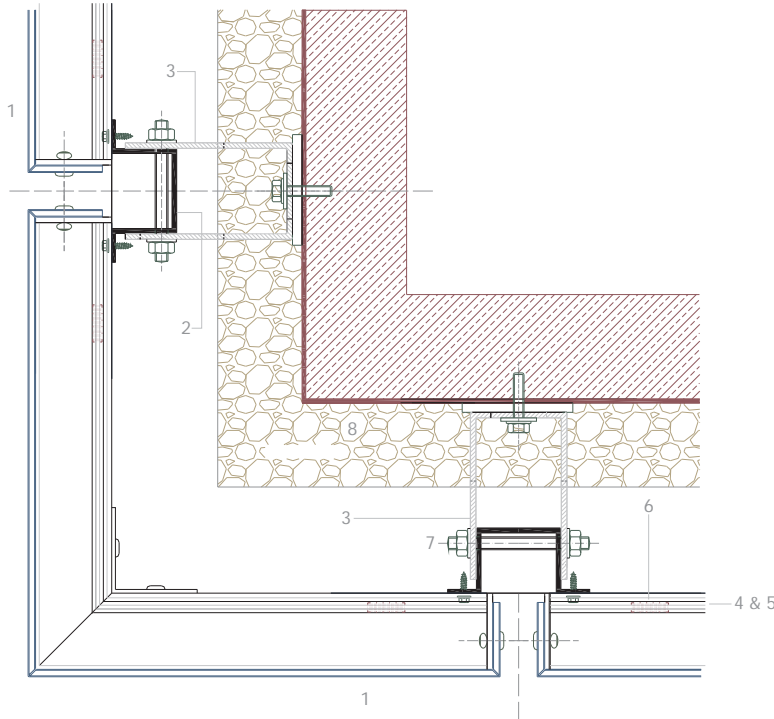


CLADDING CLOSURE **DETAIL BOTTOM LC-4 / LC-6**



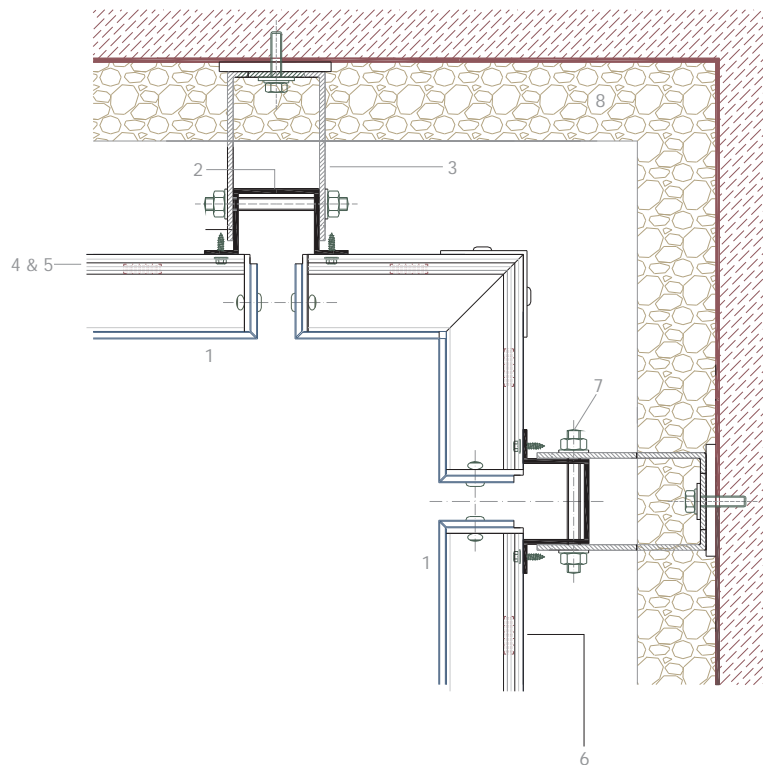
- 1. ACM Cladding
- 2. Profile LCH1
- 3. Fixing Profile LCH2
- 4. Profile LC4
- 5. Profile LC6
- 6. Antivibration piece
- 7. Fixing screws
- 8. Insulation

HORIZONTAL CORNER **DETAIL LC-4 / LC-6**



- 1. ACM Cladding
- 2. Profile LCH1
- 3. Fixing Profile LCH2
- 4. Profile LC4
- 5. Profile LC6
- 6. Antivibration piece
- 7. Fixing screws
- 8. Insulation

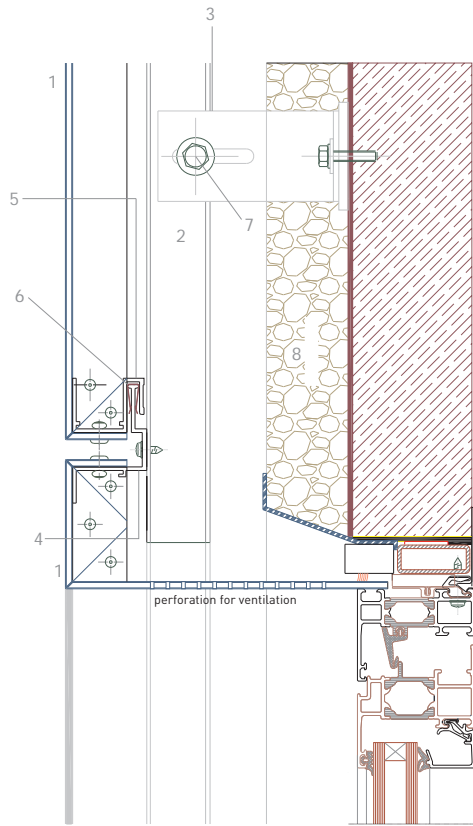
HORIZONTAL INTERNAL CORNER **DETAIL LC-4 / LC-6**



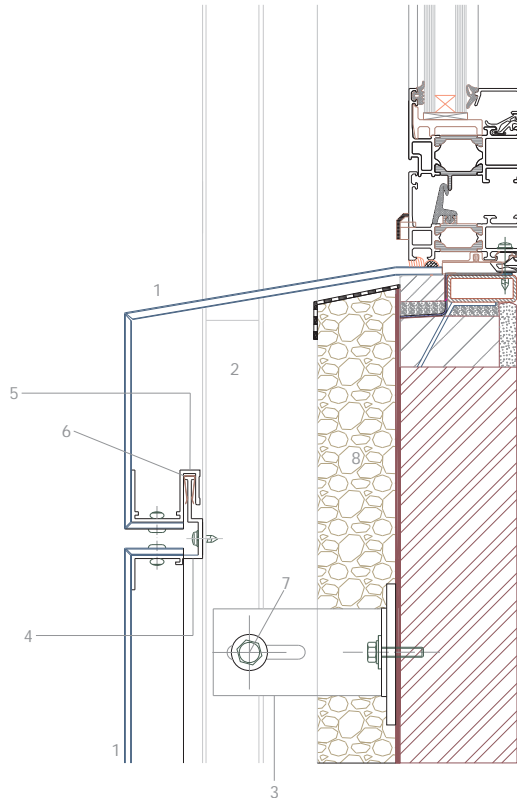
- 1. ACM Cladding
- 2. Profile LCH1
- 3. Fixing Profile LCH2
- 4. Profile LC4
- 5. Profile LC6
- 6. Antivibration piece
- 7. Fixing screws
- 8. Insulation

DETAIL HEAD OF WINDOW LC-4 / LC-6

- 1. ACM Cladding
- 2. Profile LCH1
- 3. Fixing Profile LCH2
- 4. Profile LC4
- 5. Profile LC6
- 6. Antivibration piece
- 7. Fixing screws
- 8. Insulation

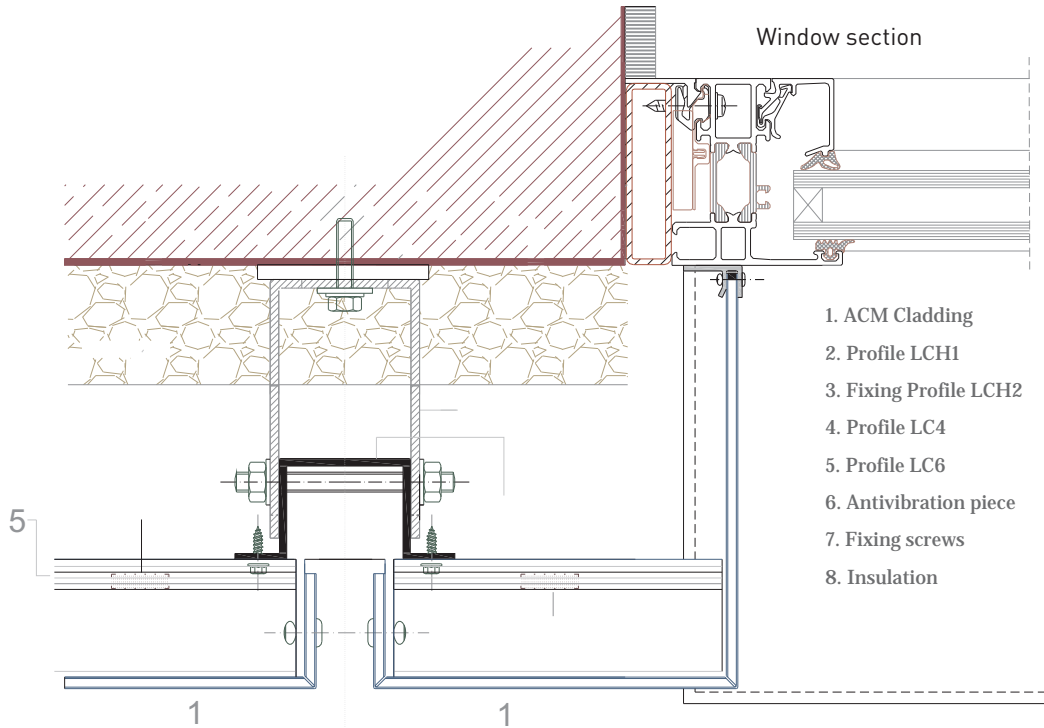


EXTERNAL CILL DETAIL AT WINDOW LC-4 / LC-6

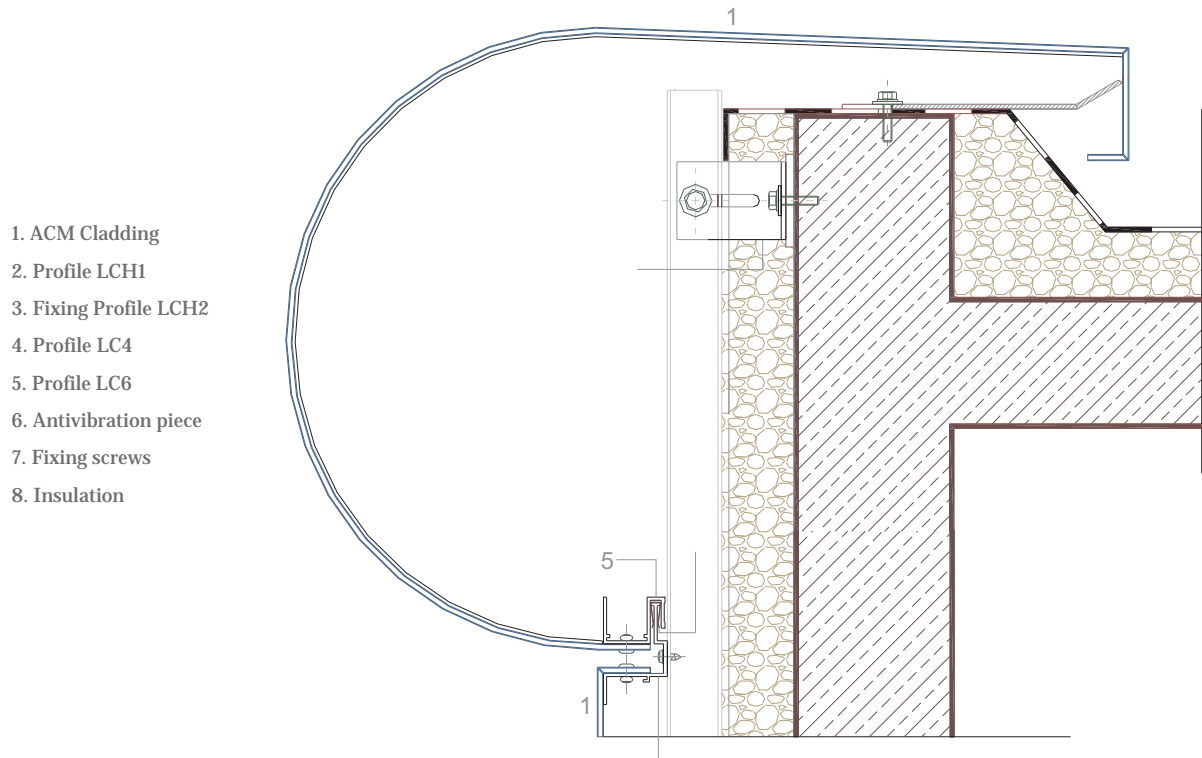


- 1. ACM Cladding
- 2. Profile LCH1
- 3. Fixing Profile LCH2
- 4. Profile LC4
- 5. Profile LC6
- 6. Antivibration piece
- 7. Fixing screws
- 8. Insulation

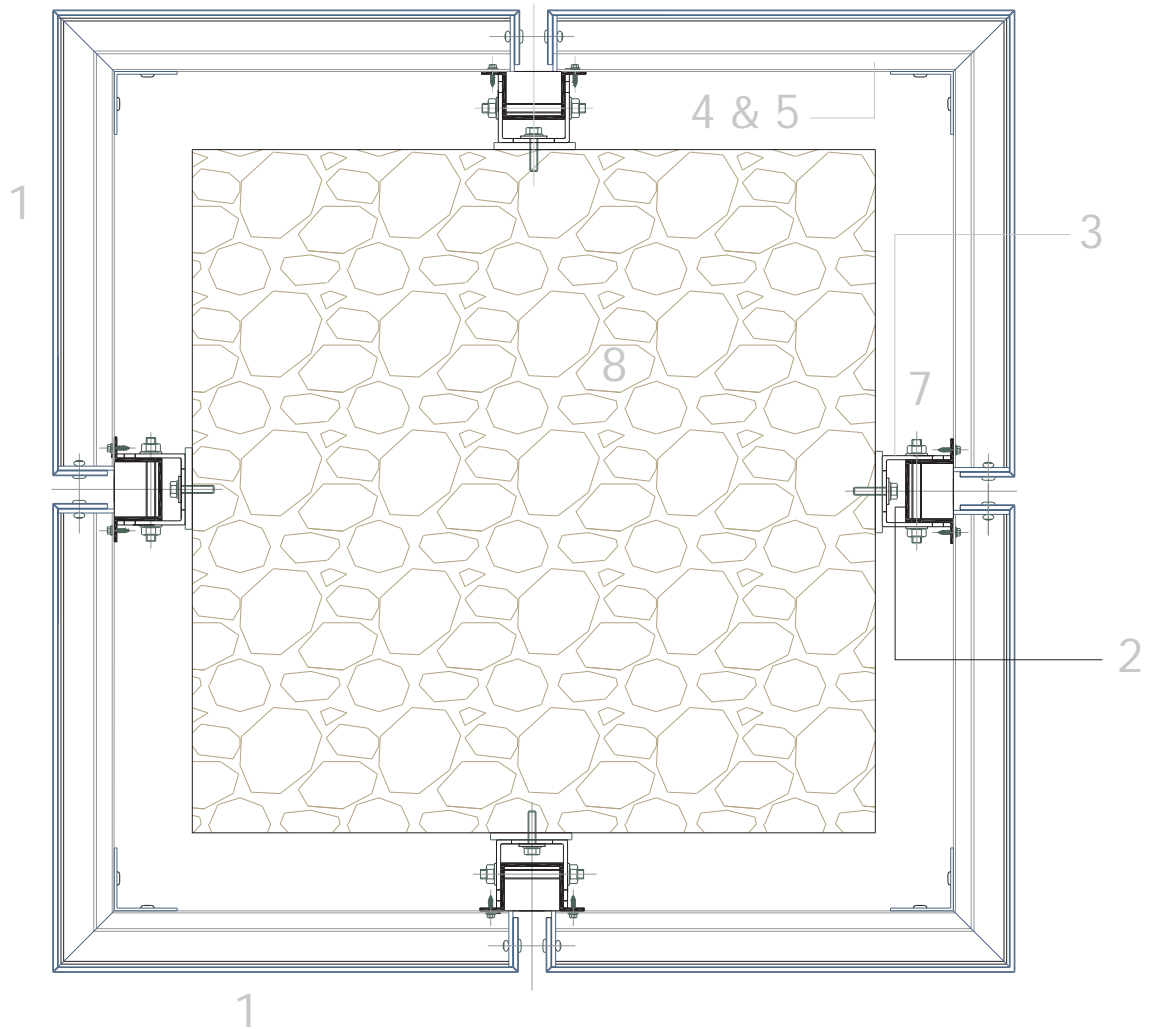
HORIZONTAL SECTION JAMB LC-4 / LC-6



BUILDING SURMOUNTING LC-4 / LC-6



## COLUMN DETAIL LC-4 / LC-6



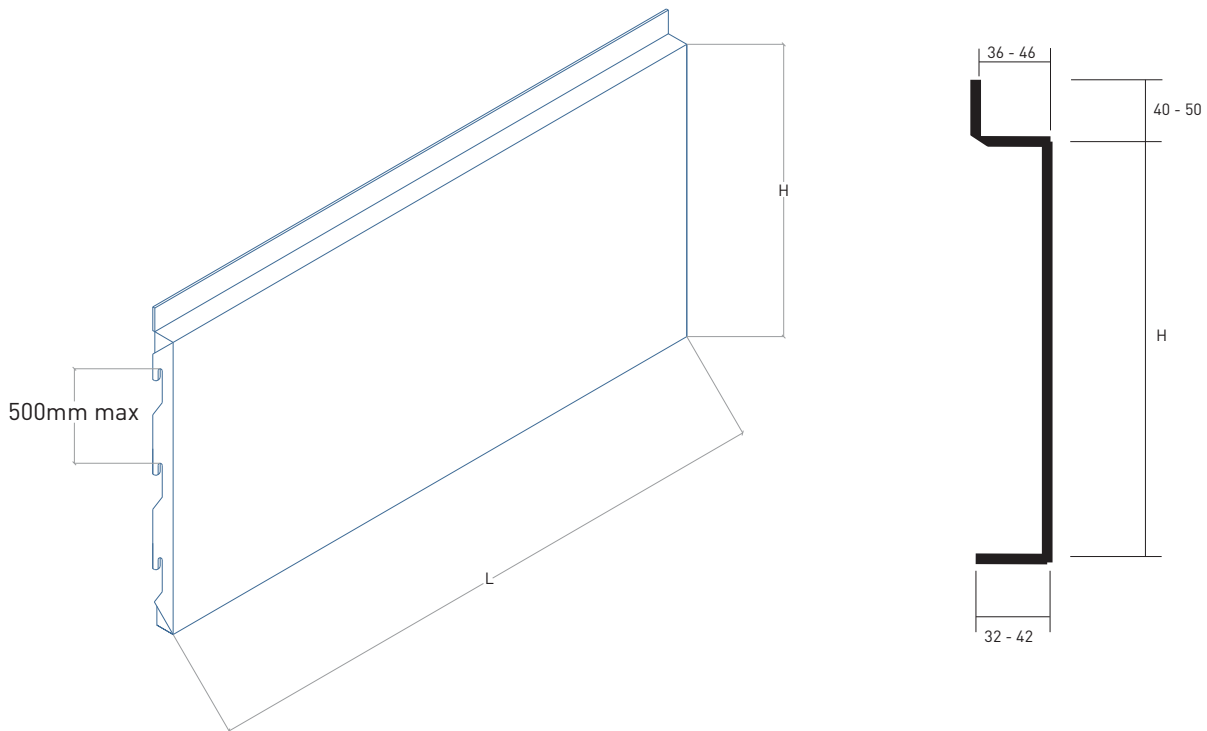
1. ACM Cladding
2. Profile LCH1
3. Fixing Profile LCH2
4. Profile LC4
5. Profile LC6
6. Antivibration piece
7. Fixing screws
8. Insulation

Wind pressure (kg/m<sup>2</sup>) without reinforcement, ACM panel 4mm.

Length			900	1000	1150	1300	1400	1500	1700	1800	2000	2200	2300	2400	2700	2800
Width	Fixings by side	Lateral														
860	3	40	174	142	107	83	70	60	44	38	29	23	20	18	13	11
		50	217	183	148	122	107	95	74	66	52	38	37	32	24	22
1010	3	40	-	-	84	65	56	48	36	31	24	18	16	15	10	9
		50	-	-	111	91	80	71	57	51	40	33	29	26	20	18
1110	3	40	-	-	74	57	48	42	31	27	21	16	14	13	9	8
		50	-	-	95	77	68	60	48	43	35	28	25	23	17	16
1260	4	40	-	-	-	48	41	35	26	23	18	14	12	11	8	7
		50	-	-	-	63	55	49	39	35	28	23	21	19	14	13
1360	4	40	-	-	-	-	37	31	23	21	16	12	11	10	7	6
		50	-	-	-	-	49	43	34	31	25	20	19	17	13	12

According to calculations of the **Aeronautical Engineers University School, Madrid**

### Horizontal



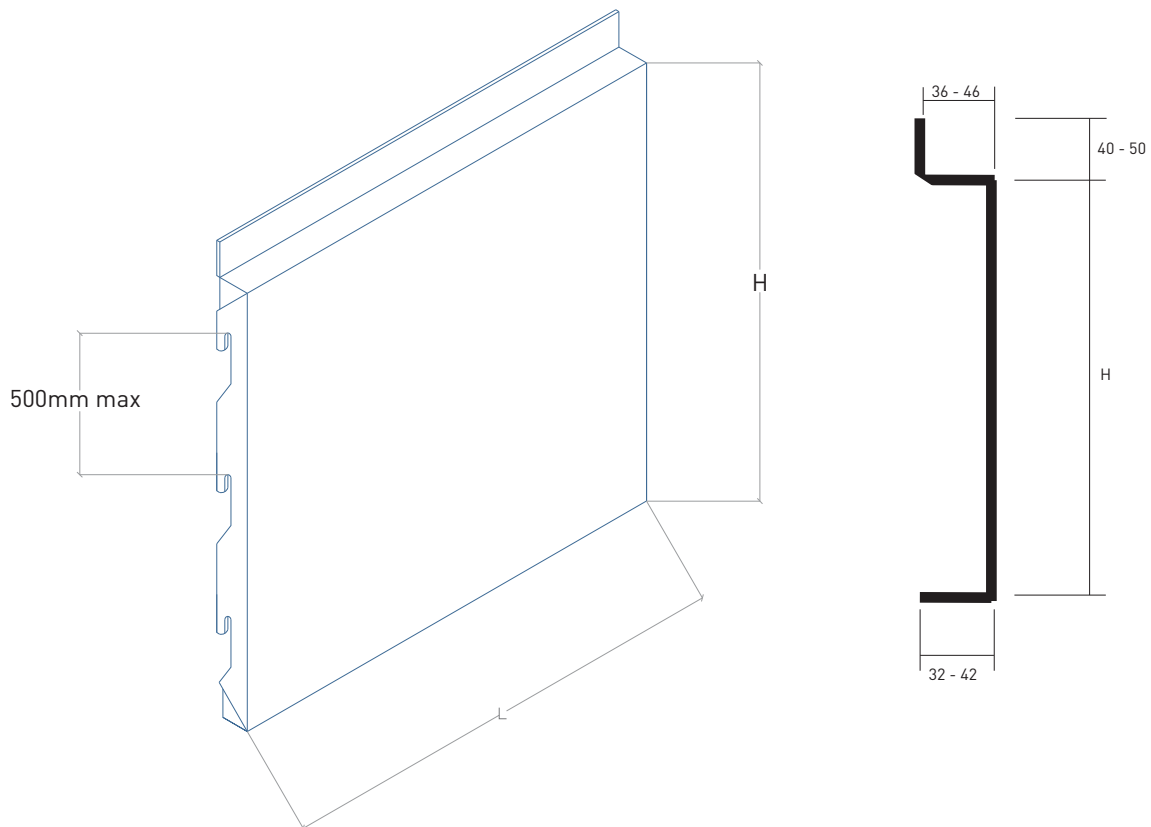
Wind pressure (kg/m<sup>2</sup>) without reinforcement, ACM panel 4mm.

Width	900	1000	1150	1300	1400	1500	1700	1800	2000	2200	2300	2400	2700	2800
	3	3	3	4	4	4	5	5	5	6	6	6	7	7

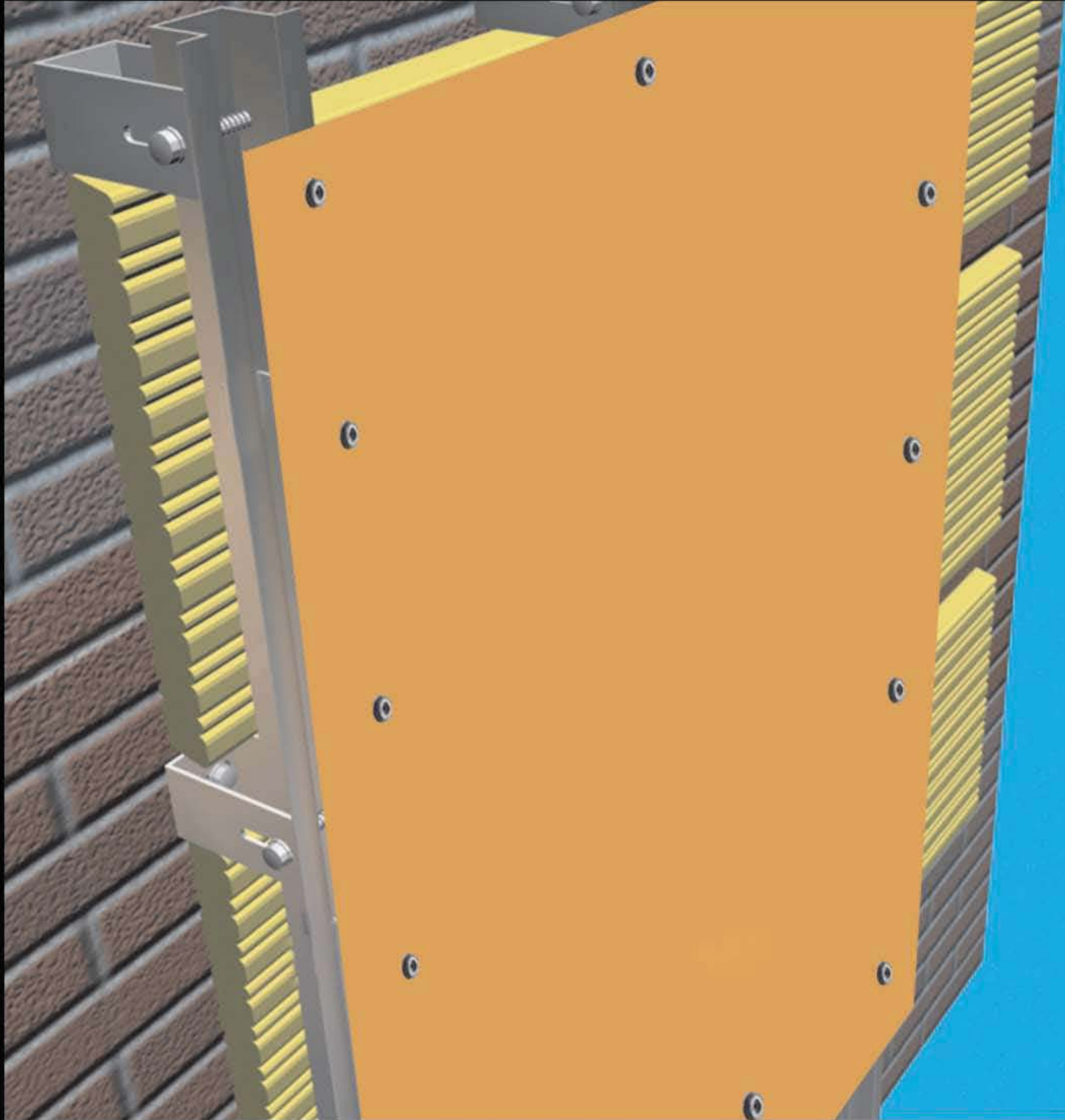
Length	Lateral														
900	40	164	135	109	93	85	79	70	66	61	57	55	54	50	49
	50	202	166	133	113	103	96	85	81	75	70	68	67	63	62
1000	40	-	114	90	75	67	62	54	51	46	43	41	40	37	36
	50	-	143	111	92	83	76	67	63	57	53	52	50	47	46
1150	40	-	-	71	57	51	46	39	36	32	30	28	27	25	24
	50	-	-	90	72	64	58	49	46	41	38	36	35	32	31
1250	40	-	-	-	49	43	39	32	30	27	24	23	22	20	19
	50	-	-	-	64	56	50	41	38	34	31	29	28	26	25
1400	40	-	-	-	-	35	31	26	24	20	18	17	16	15	14
	50	-	-	-	-	47	41	33	31	27	24	23	22	19	19

According to calculations of the **Aeronautical Engineers University School, Madrid**

## Vertical



# riveted system



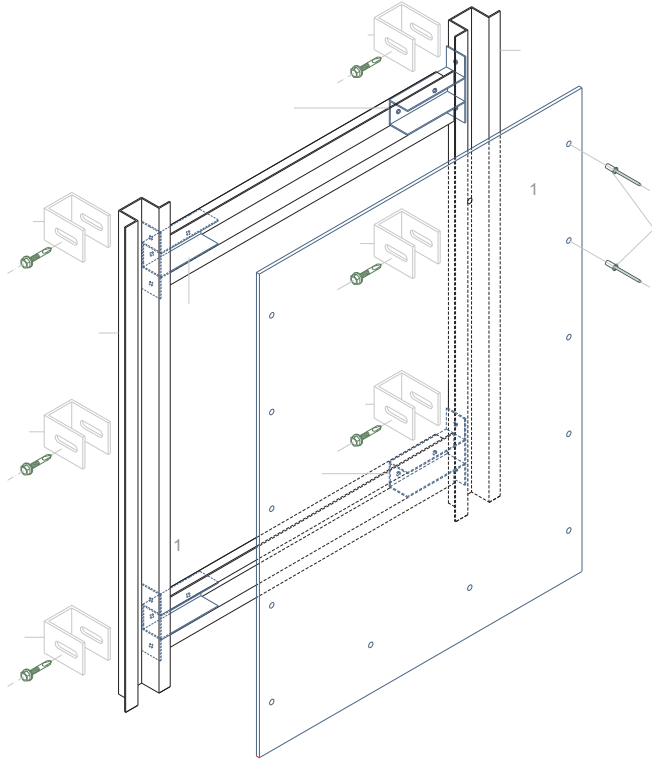
N E S | V I S U A L T H I N K I N G

T/ 01206 843 200

E/ [info@nes-solutions.co.uk](mailto:info@nes-solutions.co.uk)

W/ [nes-solutions.co.uk](http://nes-solutions.co.uk)

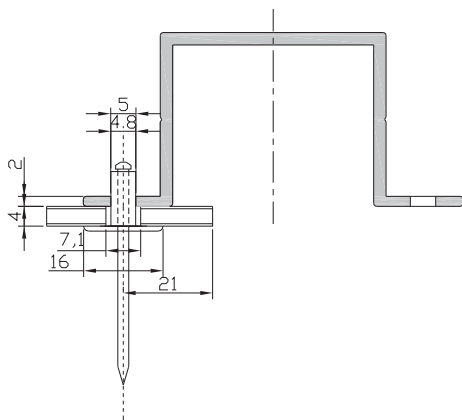
### RIVETED PERSPECTIVE VIEW



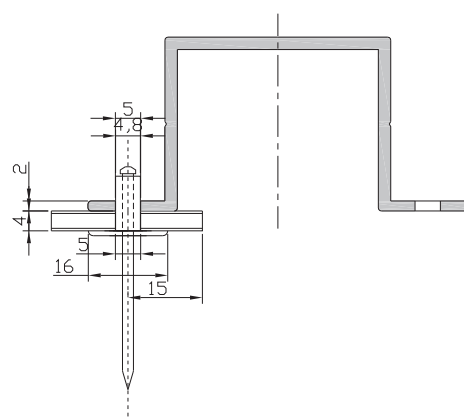
- 1. ACM Cladding
- 2. Profile LCH1
- 3. Profile LC-13
- 4. Fixing profile LCH2
- 5. Insulation
- 6. System for fixing onto structure
- 7. AL-Stainless steel rivet diameter 4.8mm
- 8. Perforation for ventilation
- 9. AL Rivet diameter 5mm

### DETAIL OF RIVETING

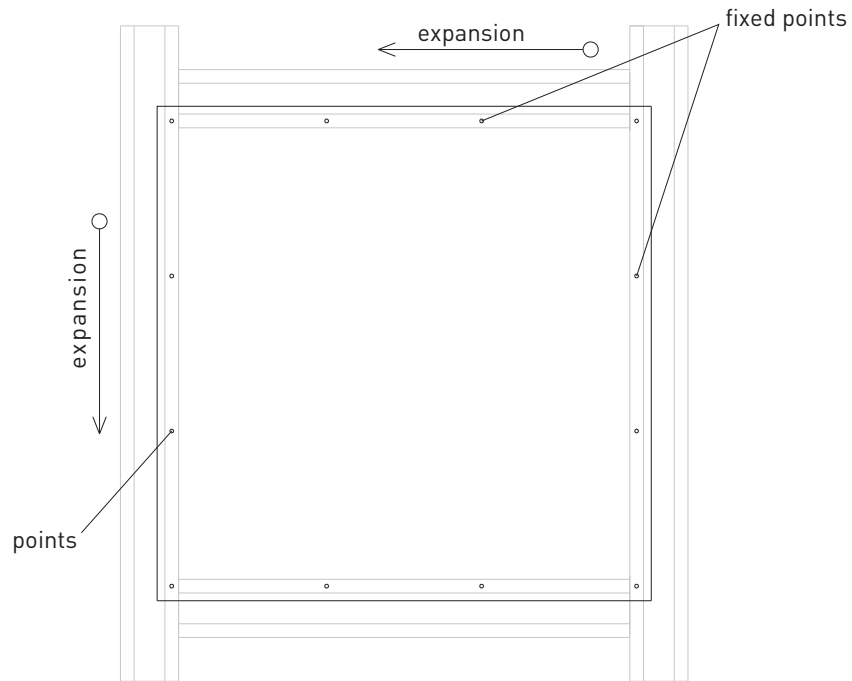
free point



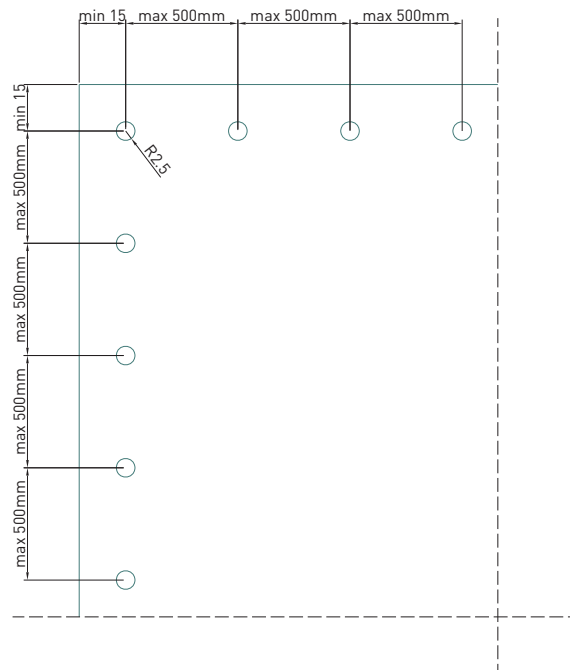
fixed point



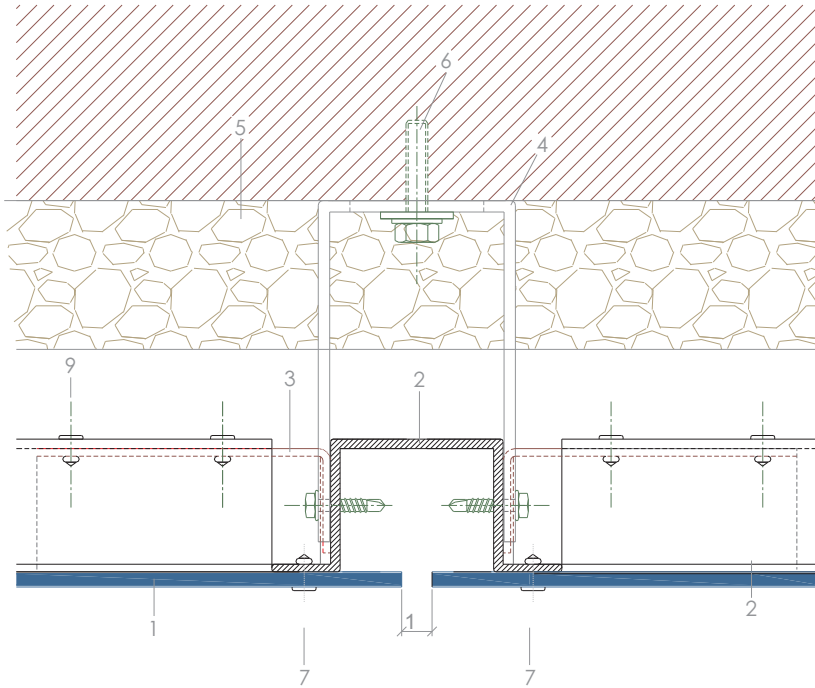
## FREE AND FIXED POINTS



## PERFORATION LAYOUT



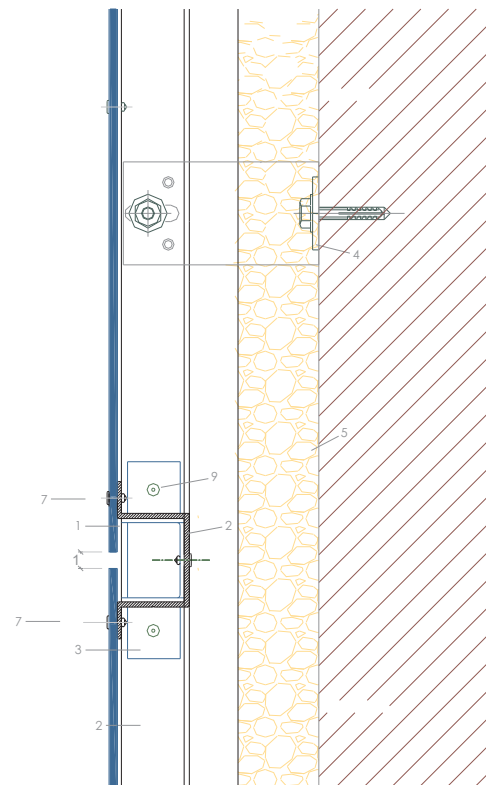
### HORIZONTAL SECTION



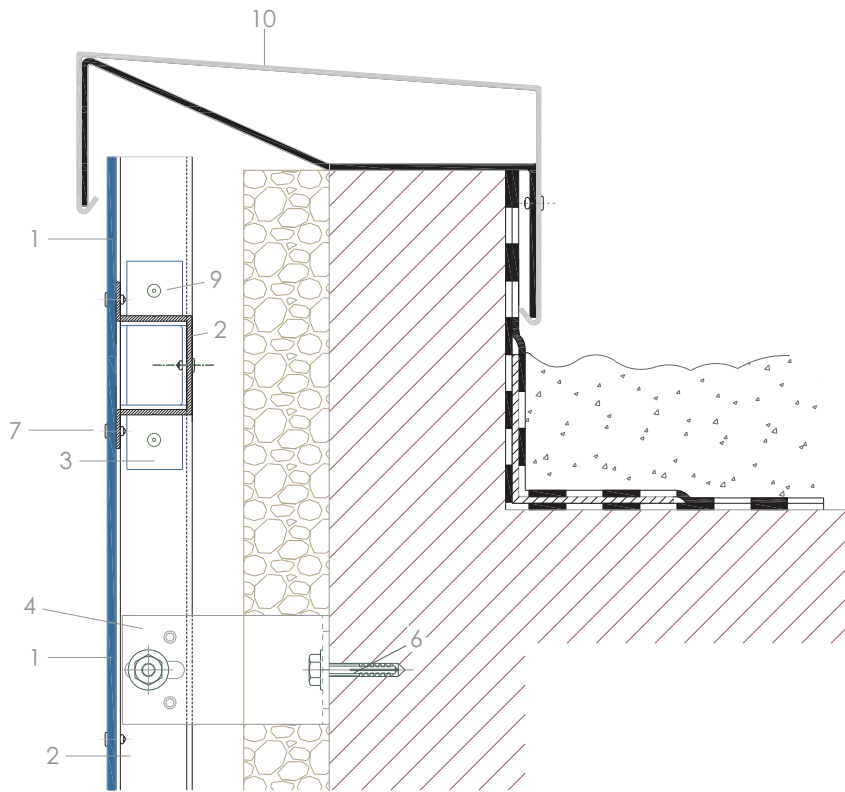
1. ACM Cladding
2. Profile LCH1
3. Profile LC-13
4. Fixing profile LCH2
5. Insulation
6. System for fixing onto structure
7. AL-Stainless steel rivet diameter 4.8mm
8. Perforation for ventilation
9. AL Rivet diameter 5mm

### VERTICAL SECTION

1. ACM Cladding
2. Profile LCH1
3. Profile LC-13
4. Fixing profile LCH2
5. Insulation
6. System for fixing onto structure
7. AL-Stainless steel rivet diameter 4.8mm
8. Perforation for ventilation
9. AL Rivet diameter 5mm



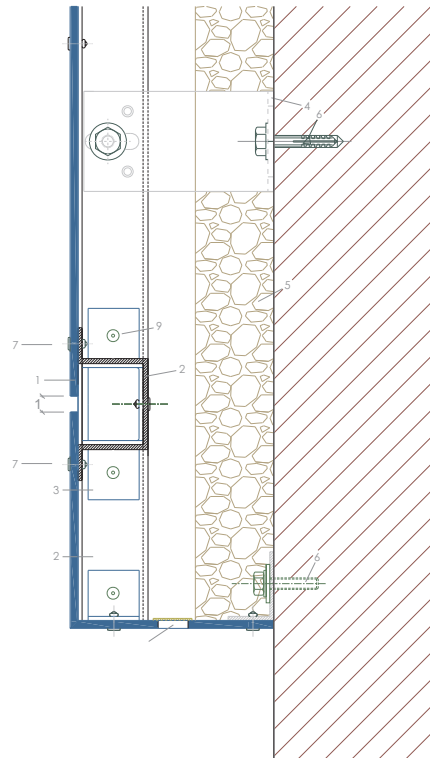
## BUILDING SURMOUNTING



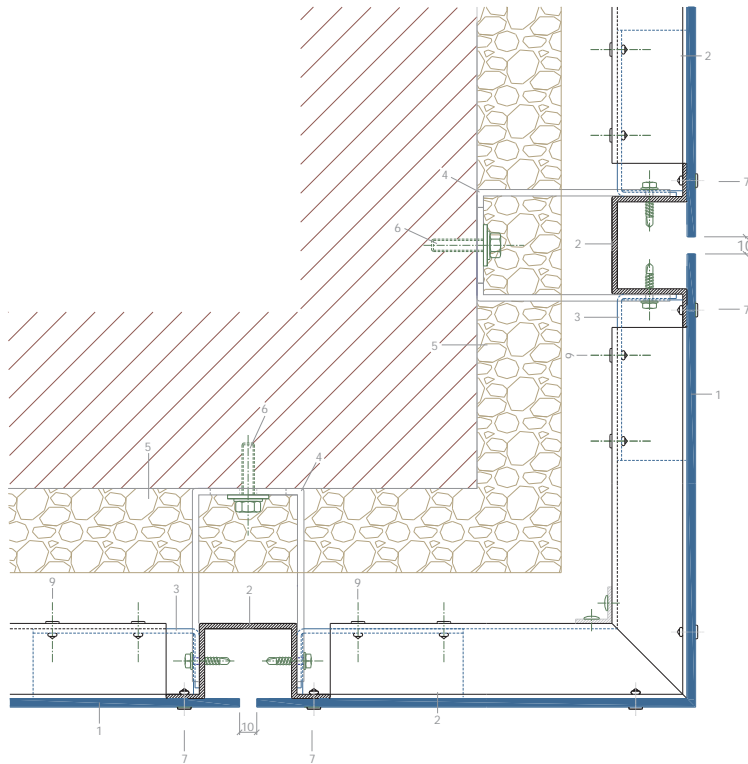
1. ACM Cladding
2. Profile LCH1
3. Profile LC-13
4. Fixing profile LCH2
5. Insulation
6. System for fixing onto structure
7. AL-Stainless steel rivet diameter 4.8mm
8. Perforation for ventilation
9. AL Rivet diameter 5mm

## CLADDING CLOSURE DETAIL BOTTOM

1. ACM Cladding
2. Profile LCH1
3. Profile LC-13
4. Fixing profile LCH2
5. Insulation
6. System for fixing onto structure
7. AL-Stainless steel rivet diameter 4.8mm
8. Perforation for ventilation
9. AL Rivet diameter 5mm

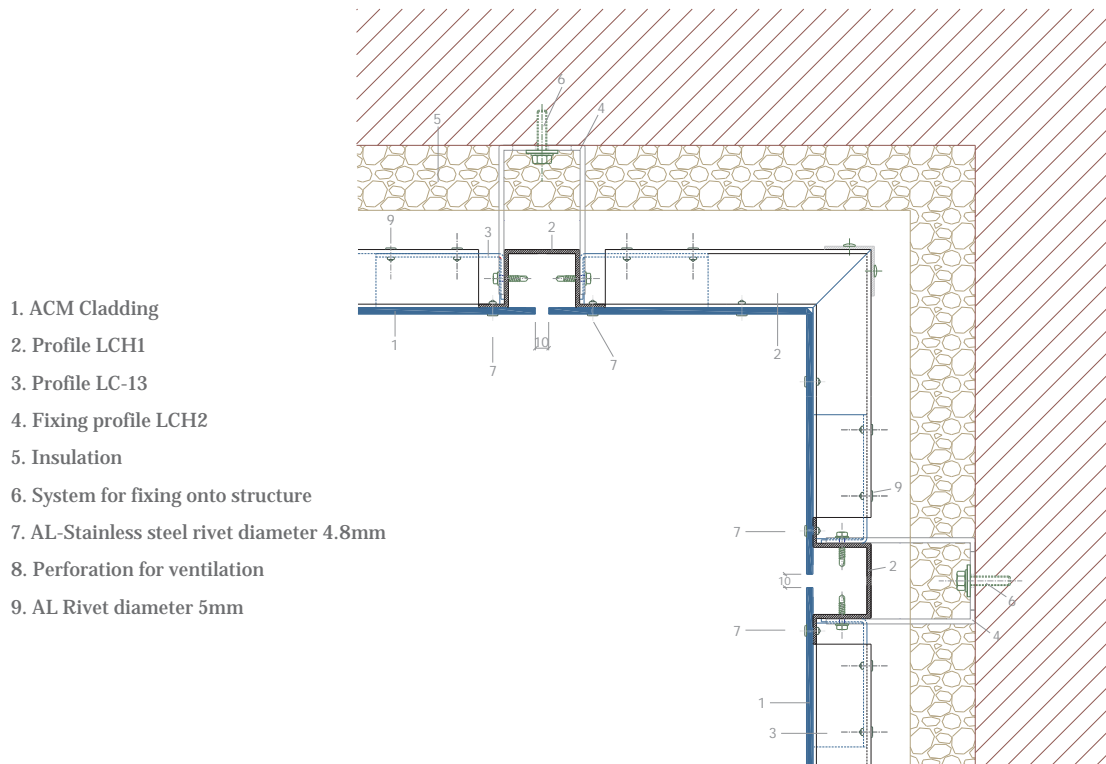


### HORIZONTAL CORNER DETAIL



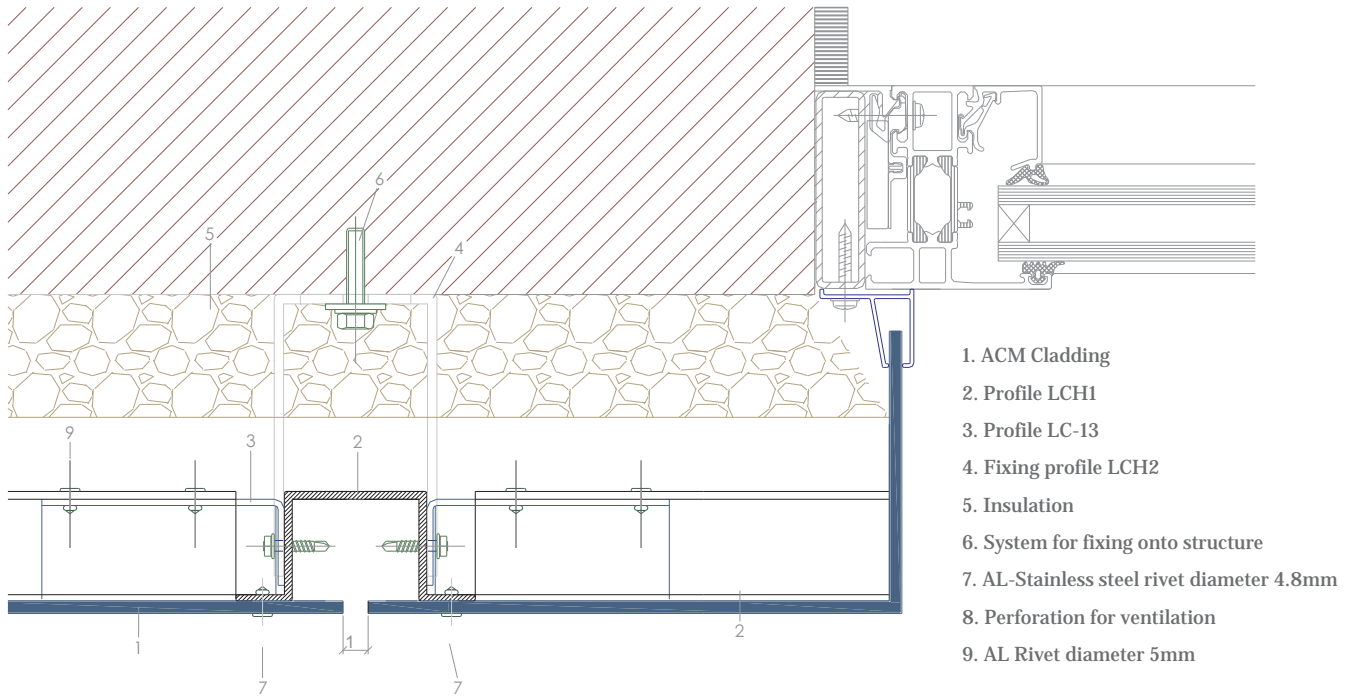
- 1. ACM Cladding
- 2. Profile LCH1
- 3. Profile LC-13
- 4. Fixing profile LCH2
- 5. Insulation
- 6. System for fixing onto structure
- 7. AL-Stainless steel rivet diameter 4.8mm
- 8. Perforation for ventilation
- 9. AL Rivet diameter 5mm

### HORIZONTAL INTERNAL CORNER DETAIL



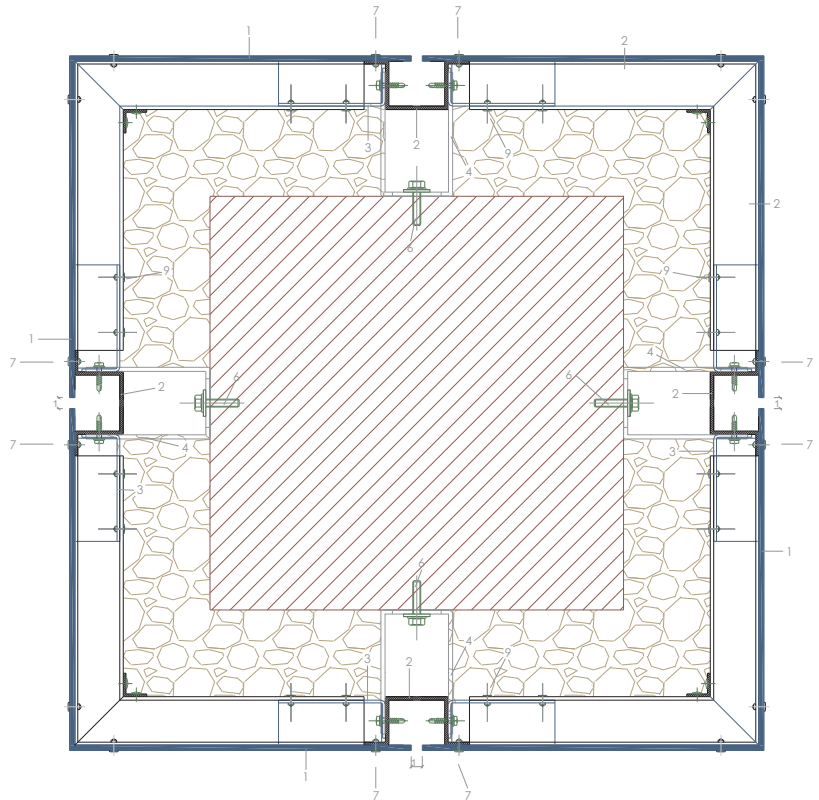
- 1. ACM Cladding
- 2. Profile LCH1
- 3. Profile LC-13
- 4. Fixing profile LCH2
- 5. Insulation
- 6. System for fixing onto structure
- 7. AL-Stainless steel rivet diameter 4.8mm
- 8. Perforation for ventilation
- 9. AL Rivet diameter 5mm

### HORIZONTAL SECTION JAMB



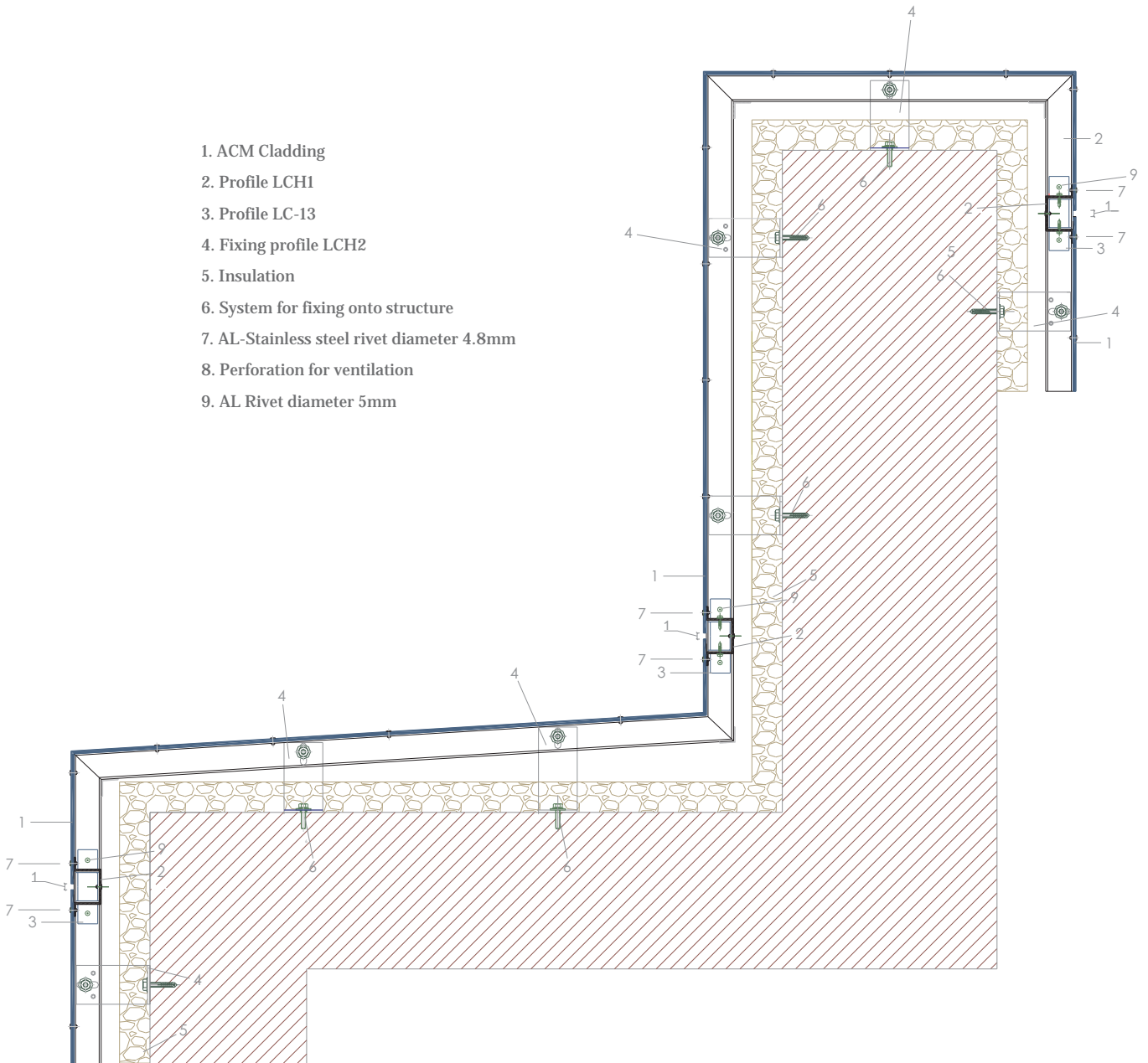
### COLUMN DETAIL

- 1. ACM Cladding
- 2. Profile LCH1
- 3. Profile LC-13
- 4. Fixing profile LCH2
- 5. Insulation
- 6. System for fixing onto structure
- 7. AL-Stainless steel rivet diameter 4.8mm
- 8. Perforation for ventilation
- 9. AL Rivet diameter 5mm



## FACADE DETAIL

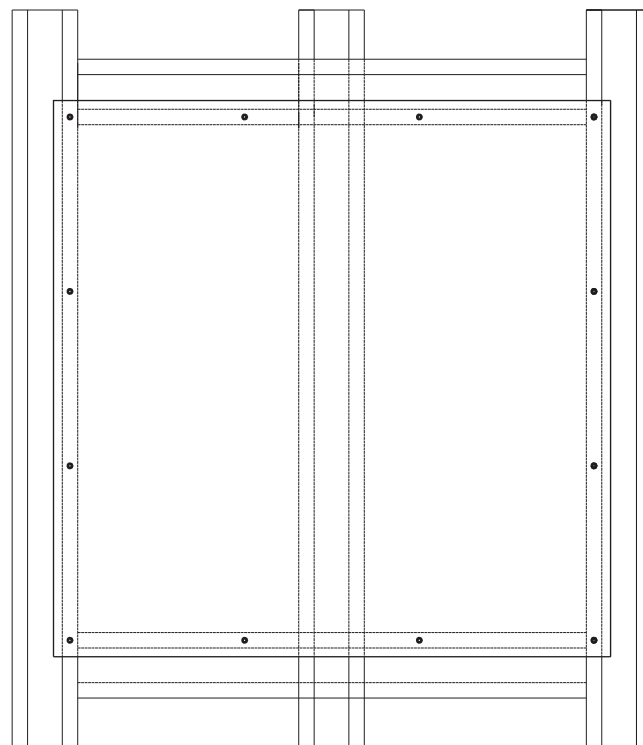
1. ACM Cladding
2. Profile LCH1
3. Profile LC-13
4. Fixing profile LCH2
5. Insulation
6. System for fixing onto structure
7. AL-Stainless steel rivet diameter 4.8mm
8. Perforation for ventilation
9. AL Rivet diameter 5mm



Wind pressure ( $\text{kg/m}^2$ ) riveted system, ACM panel 4mm.

Width	Length	Maximum wind pressure	Rivets W	Rivets L	Reinforcement
1000	1000	825	3	3	-
1000	1500	553	3	4	-
1250	1250	912	4	4	-
1250	1500	614	4	5	-
1500	1500	590	4	4	-
1500	2500	351	4	7	1
3400	1500	221	10	4	2
3400	1000	504	9	3	1
1800	1000	539	5	3	-
2500	1250	503	7	4	1

According to calculations by **CSTB (Centre Scientifique et Technique du Bâtiment)**, Paris



Riveted system