

AnoAli

Sample book

Brushed

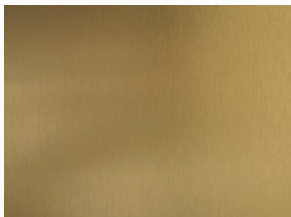
AnoAli Anodising and Surface Finishes



ANO
NATURE 01
Brushed (E2)
20 micron (A20)



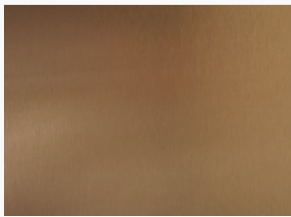
ANO
GOLD 01
Brushed (E2)
20 micron (A20)



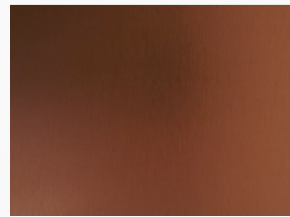
ANO
GOLD 02
Brushed (E2)
20 micron (A20)



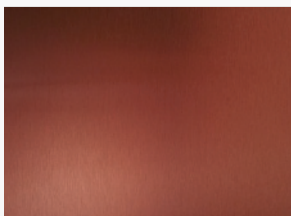
ANO
GOLD 03
Brushed (E2)
20 micron (A20)



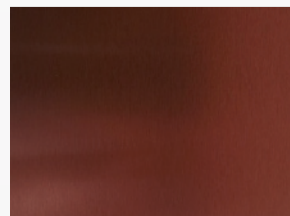
ANO
COPPER 01
Brushed (E2)
20 micron (A20)



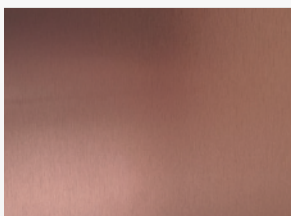
ANO
COPPER 02
Brushed (E2)
20 micron (A20)



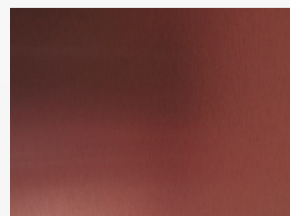
ANO
COPPER 03
Brushed (E2)
20 micron (A20)



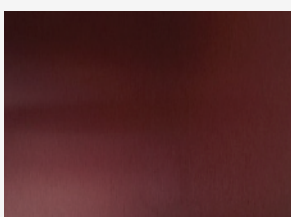
ANO
COPPER 04
Brushed (E2)
20 micron (A20)



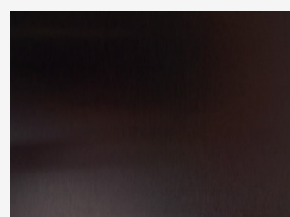
ANO
RED 01
Brushed (E2)
20 micron (A20)



ANO
RED 02
Brushed (E2)
20 micron (A20)



ANO
RED 03
Brushed (E2)
20 micron (A20)

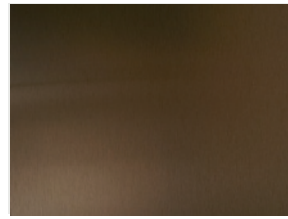


ANO
RED 04
Brushed (E2)
20 micron (A20)

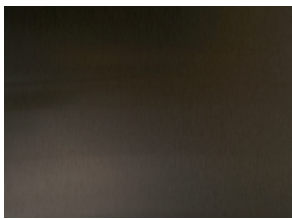
AnoAli Anodising and Surface Finishes



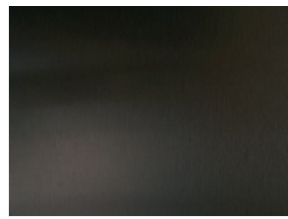
ANO
BRASS 01
Brushed (E2)
20 micron (A20)



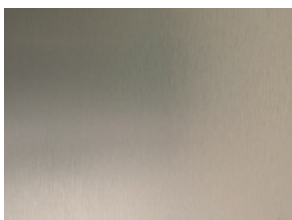
ANO
BRASS 02
Brushed (E2)
20 micron (A20)



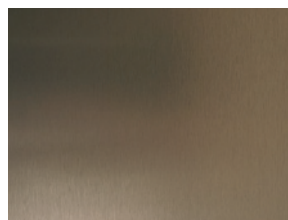
ANO
BRASS 03
Brushed (E2)
20 micron (A20)



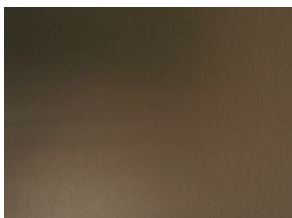
ANO
BRASS 04
Brushed (E2)
20 micron (A20)



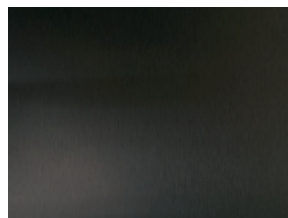
ANO
BRONZE01
Brushed (E2)
20 micron (A20)



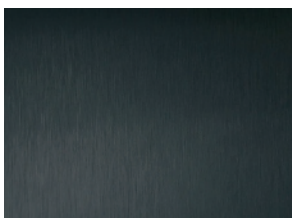
ANO
BRONZE02
Brushed (E2)
20 micron (A20)



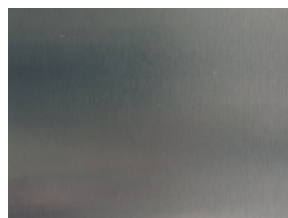
ANO
BRONZE03
Brushed (E2)
20 micron (A20)



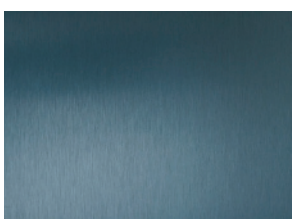
ANO
BRONZE04
Brushed (E2)
20 micron (A20)



ANO
BLACK 01
Brushed (E2)
20 micron (A20)



ANO
GREY01
Brushed (E2)
20 micron (A20)



ANO
BLUE 01
Brushed (E2)
20 micron (A20)



ANO
GREEN01
Brushed (E2)
20 micron (A20)

AnoAli Anodising and Surface Finishes



Attractive appearance whilst retaining metal character



LCA, expected lifespan of more than 80 years



Low maintenance (Easy to clean)



High solar reflectivity, Cool Buildings



20 year guarantee on all colours Qualanod



Easy to recycle (Cradle to Cradle)



Durable, corrosion-resistant and colourfast



40 year guarantee on all colours BS 3987



Easy to reuse (Circular Economy)

Pre-treatment

CODING

PRE-TREATMENT

| | | |
|----|-----------------------------|--|
| E0 | No pre-treatment (VB0) | Anodising for industrial applications |
| E1 | Grinding (VB1) | Light grinding for matt etching, smooth surface |
| E2 | Brushing (VB2) | Light grinding and brushing, visible brush marks |
| E3 | Polishing (VB2) | Polishing without removing surface marks |
| E4 | Grinding + Brushing (VB4) | Grinding and brushing, shiny, small brush marks |
| E5 | Grinding + Polishing (VB5) | Light grinding and polishing, smooth shiny surface |
| E6 | Chemical Matt Etching (VB6) | Matt etching |

Anodising

CODING

LAYER THICKNESS

| | | |
|-----|-----------|---|
| A5 | 5 micron | Indoor use |
| A10 | 10 micron | Indoor use (standard indoor use) |
| A15 | 15 micron | Outdoor use |
| A20 | 20 micron | Outdoor use (standard outdoor use) |
| A25 | 25 micron | Outdoor use (industrial / coastal area or BS) |

Anodising colours

CODING

COLOUR

| | |
|---------------|-----------------------------|
| ANO NATURE 01 | Natural (Co) |
| ANO GOLD 01 | Champagne (Very light gold) |
| ANO GOLD 02 | Gold (VOM2) |
| ANO GOLD 03 | Dark Gold (VOM3) |
| ANO COPPER 01 | Light copper (orange) |
| ANO COPPER 02 | Medium light copper |
| ANO COPPER 03 | Medium dark copper |
| ANO COPPER 04 | Dark copper |
| ANO RED 01 | Pink (Light red) |
| ANO RED 02 | Medium light red |
| ANO RED 03 | Medium dark red |
| ANO RED 04 | Dark cardinal red |

CODING

COLOUR

| | |
|---------------|-------------------------------|
| ANO BRASS 01 | Light brown brass |
| ANO BRASS 02 | Medium light brown brass |
| ANO BRASS 03 | Medium dark brown brass |
| ANO BRASS 04 | Dark brown brass |
| ANO BRONZE 01 | Titanium - light bronze (C31) |
| ANO BRONZE 02 | Medium - light bronze (C32) |
| ANO BRONZE 03 | Medium - dark bronze (C33) |
| ANO BRONZE 04 | Dark bronze (C34) |
| ANO BLACK 01 | Black (C35) |
| ANO GREY 01 | Anthracite dark grey |
| ANO BLUE 01 | Dark blue |
| ANO GREEN 01 | Dark green |