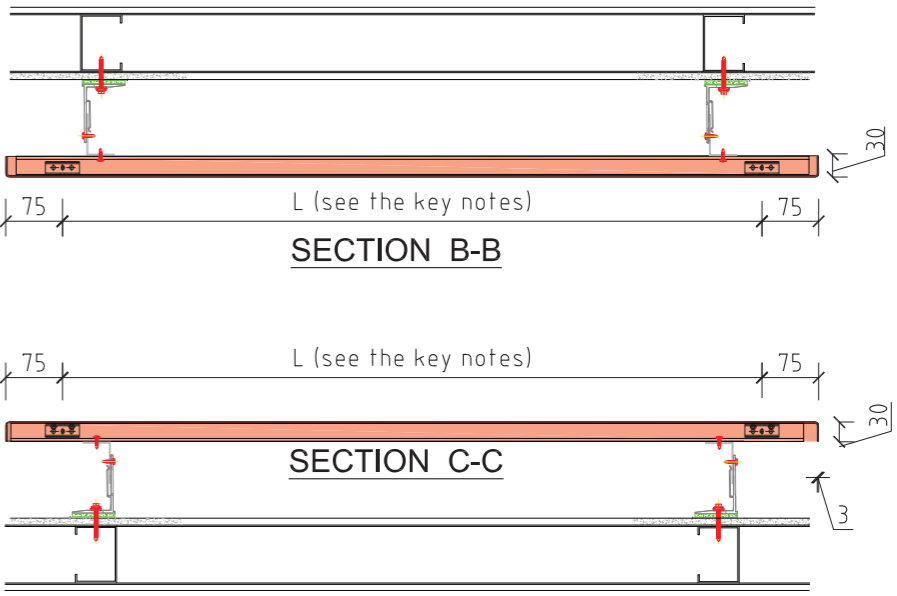


Note:  
 Cladding panels, rails and brackets included.  
 Sheathing board (CP panel or similar) excluded.  
 Damp proof / breather membrane excluded.  
 Structural element (SIPs or SFS) excluded



REV	DATE	DESCRIPTION	BY	CHK	APP	AUTH
B01	09.05.19	FOR ACCEPTANCE				

FOR ACCEPTANCE STATUS