

This drawing is the property of NES Ltd.
 No disclosure or copy to be made without
 the express written permission of NES Ltd.

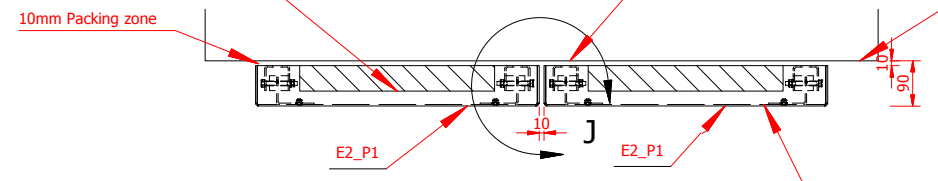
ELEVATION - 2

50mm thick silver coated KINGSPAN
 fixed to the wall between carrying channels
 using 1mm plastic washers and wood screws.

Carrying channels
 fixed to the concrete wall (by others)
 with M8 RAWLPLUG.

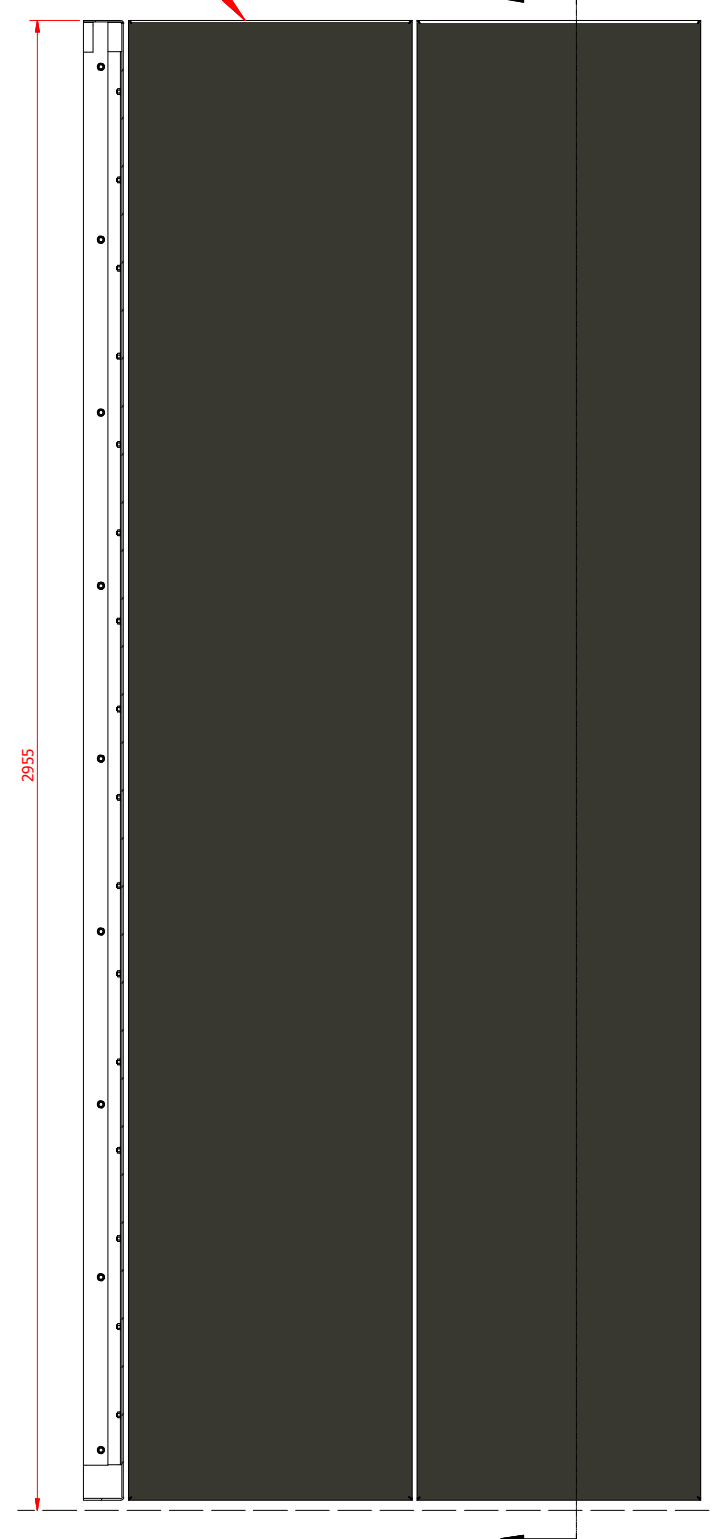
Line of fixing wall (by others)

10mm Packing zone



E-E
 1 : 15

1.5-3 mm steel panels
 hang on the wall
 using NES hooking-on system.

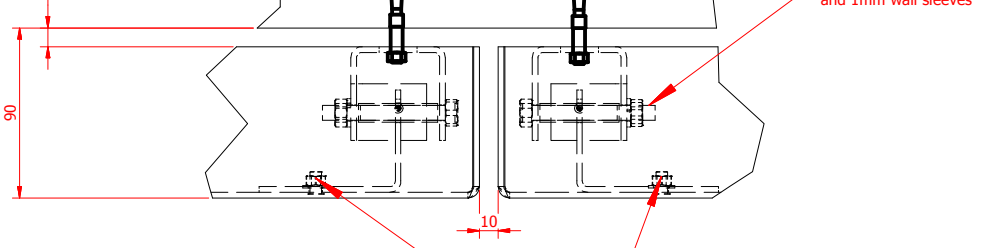


G-G
 1 : 15

Carrying channels
 fixed to the concrete wall (by others)
 with M8 RAWLPLUG.

J
 1 : 4

10 Packing Zone



M8 bolts, washers, nuts
 and 1mm wall sleeves

Carrying angle fixed
 to the panel using M6 x 12mm long CD STUDS,
 nuts and spring washers

1	FIRST ISSUE	22/10/2015
REV	REVISION TO DRAWING	DATE


NES | VISUAL THINKING
 W/ nes-solutions.co.uk T/ 01206 843200

CLIENT:

PROJECT:

DRAWING TITLE:

DRAWING No.	REV:
SC_E-2	2

SCALE:	DATE:	DRAWN BY:	STATUS:
AS SHOWN	22/10/2015	TN	WorkInProgress